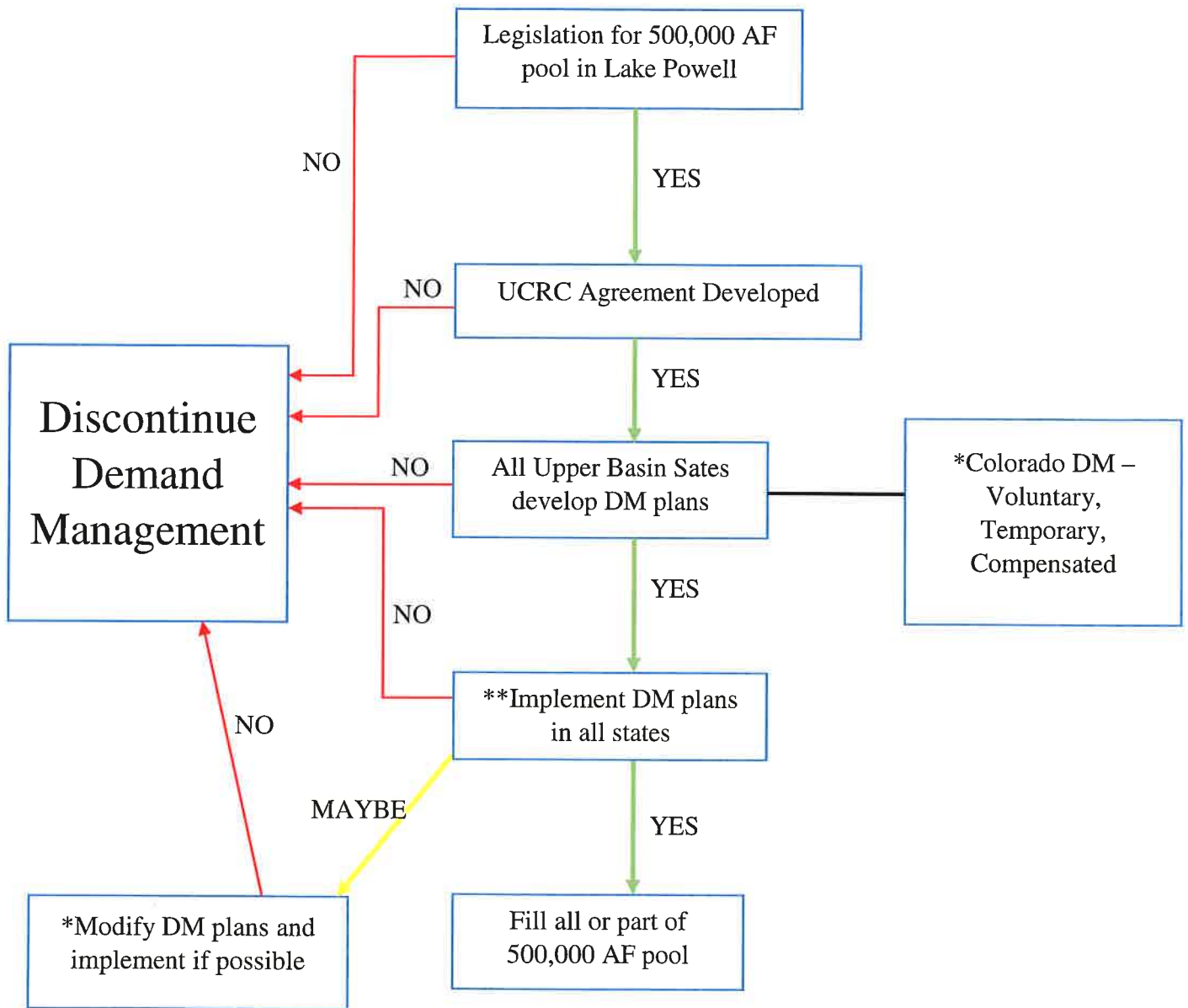


# Demand Management (DM)

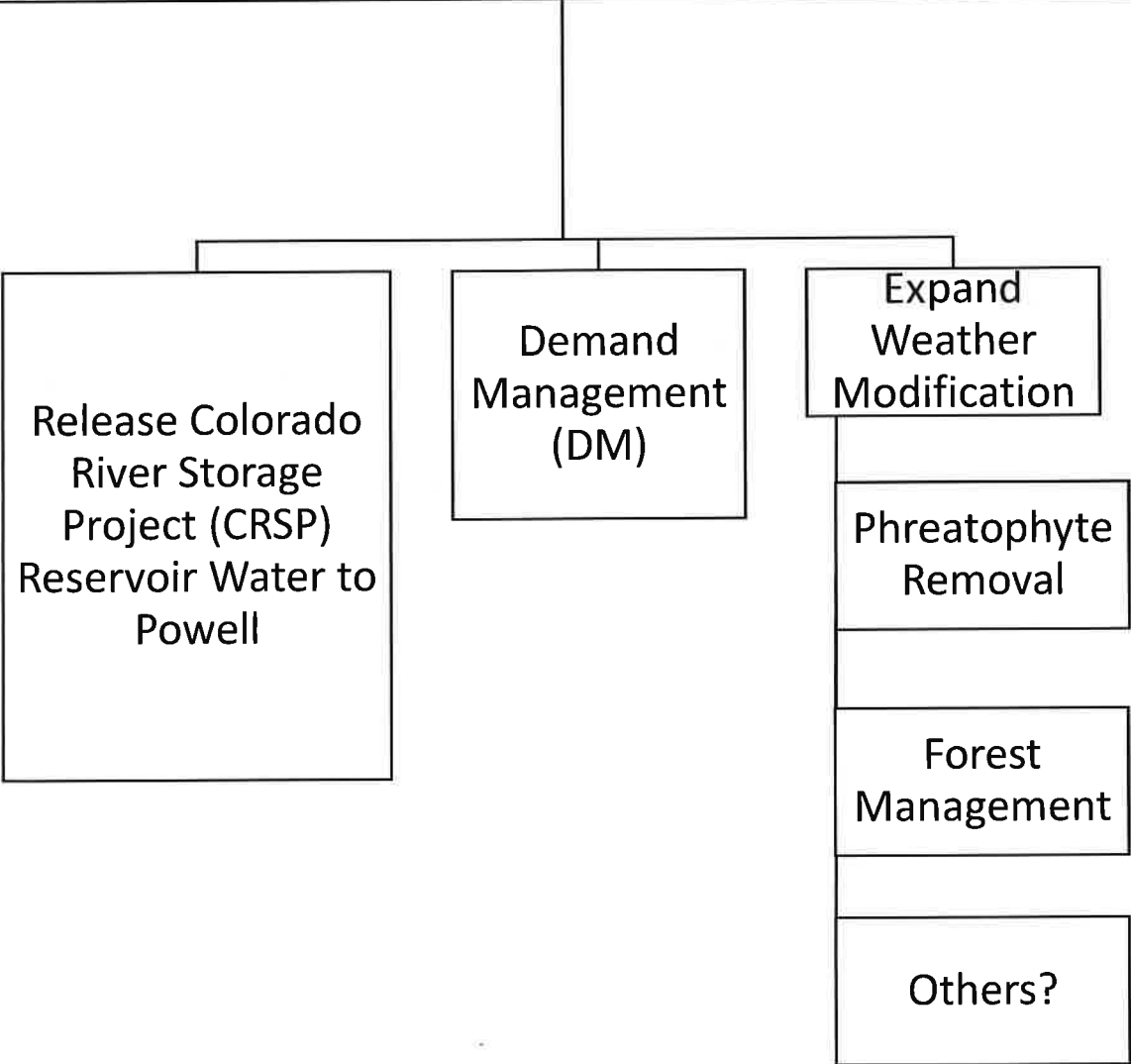


Notes:

\*Assume State of Colorado does not have current authority to develop and implement Demand Management without an agreement with water users. Assumes reductions are shared by all post compact water users.

\*\*An example payment of \$200 per AF of depletion; \$100,000,000 needed to fill 500,000 AF pool.

Avoid Curtailment & Maintain Powel Levels



**Table 1 – DCP Contributions and 2007 Interim Guidelines Shortages by State**

Projected January 1 Lake Mead Elevation (feet msl)	2007 Interim Guidelines Shortages		DCP Contributions			Combined Volumes (2007 Interim Guidelines Shortages & DCP Contributions)			
	Arizona	Nevada	Arizona	Nevada	California	Arizona	Nevada	California	Lower Division States Total
<i>(thousand acre-feet)</i>									
At or below 1,090 and above 1,075	0	0	192	8	0	192	8	0	200
At or below 1,075 and at or above 1,050	320	13	192	8	0	512	21	0	533
Below 1,050 and above 1,045	400	17	192	8	0	592	25	0	617
At or below 1,045 and above 1,040	400	17	240	10	200	640	27	200	867
At or below 1,040 and above 1,035	400	17	240	10	250	640	27	250	917
At or below 1,035 and above 1,030	400	17	240	10	300	640	27	300	967
At or below 1,030 and at or above 1,025	400	17	240	10	350	640	27	350	1,017
Below 1,025	480	20	240	10	350	720	30	350	1,100

**D. Water Deliveries/DCP Contributions**

**1. *Process regarding DCP Contributions***

In any year that DCP Contributions are required, the Secretary shall meet and confer at least once each quarter with any Contractor that is required to make DCP Contributions (as identified in Intra-State DCP Agreements) for the purpose of ensuring that the best available information regarding DCP Contribution status and the source of the DCP Contribution is available to both the Secretary and the affected Contractor. The Secretary shall consult upon request with any other Contractor regarding the implementation of DCP Contributions.

