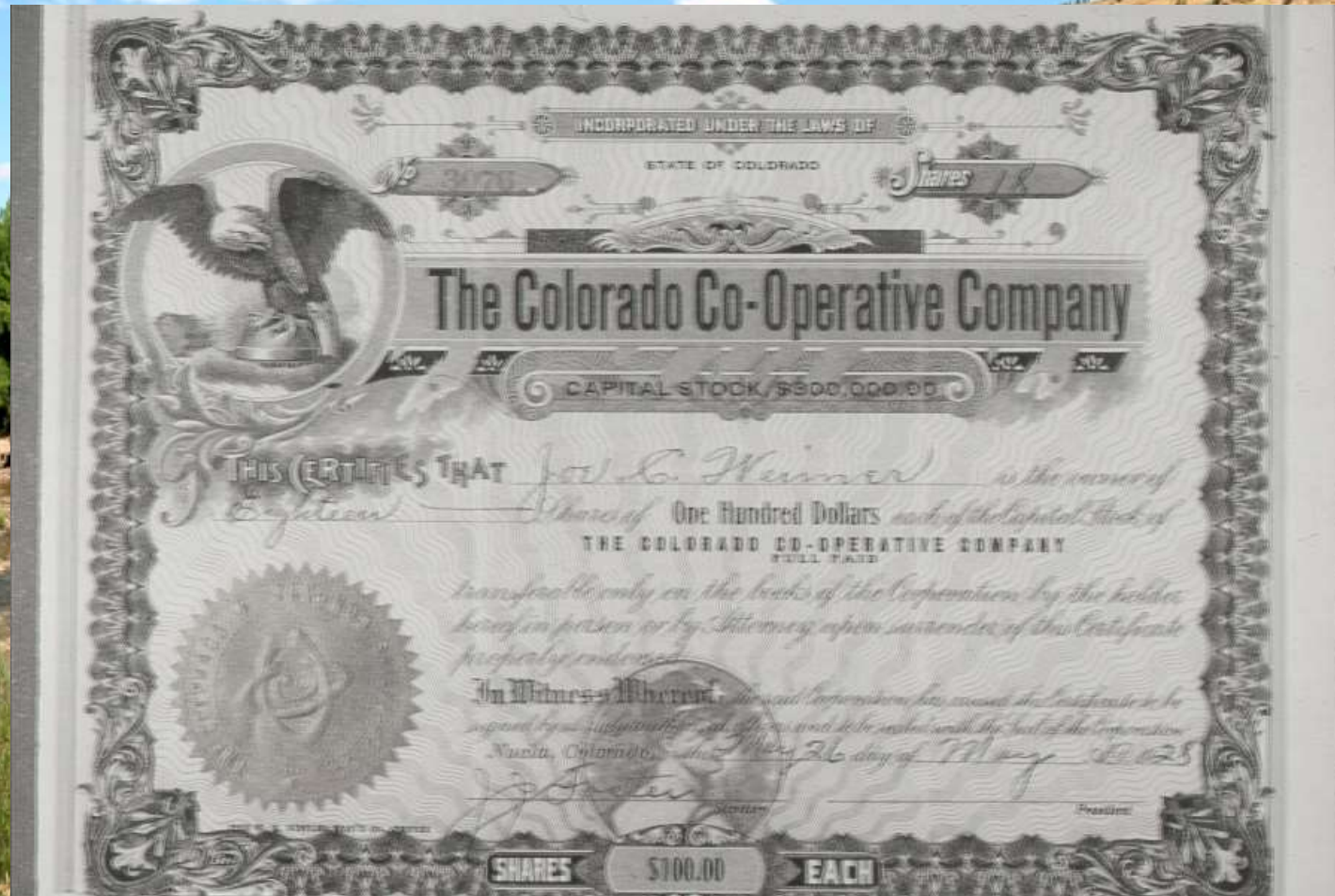


In the winter of 1894 nine men and one woman met in the city of Denver and organized

Colorado Cooperative Company

The company was incorporated on February 16, 1894.

1000 shares of stock were issued with a par value of \$100 each.



“The road for one who is not willing to work will be a hard one to travel and usually very short”

OBJECTS.

To own and operate manufactories, to acquire land, to build homes for its members, to insure protection against want or the fear of want, to provide educational and recreative facilities, and to promote and maintain harmonious social relations on the basis of co-operation.

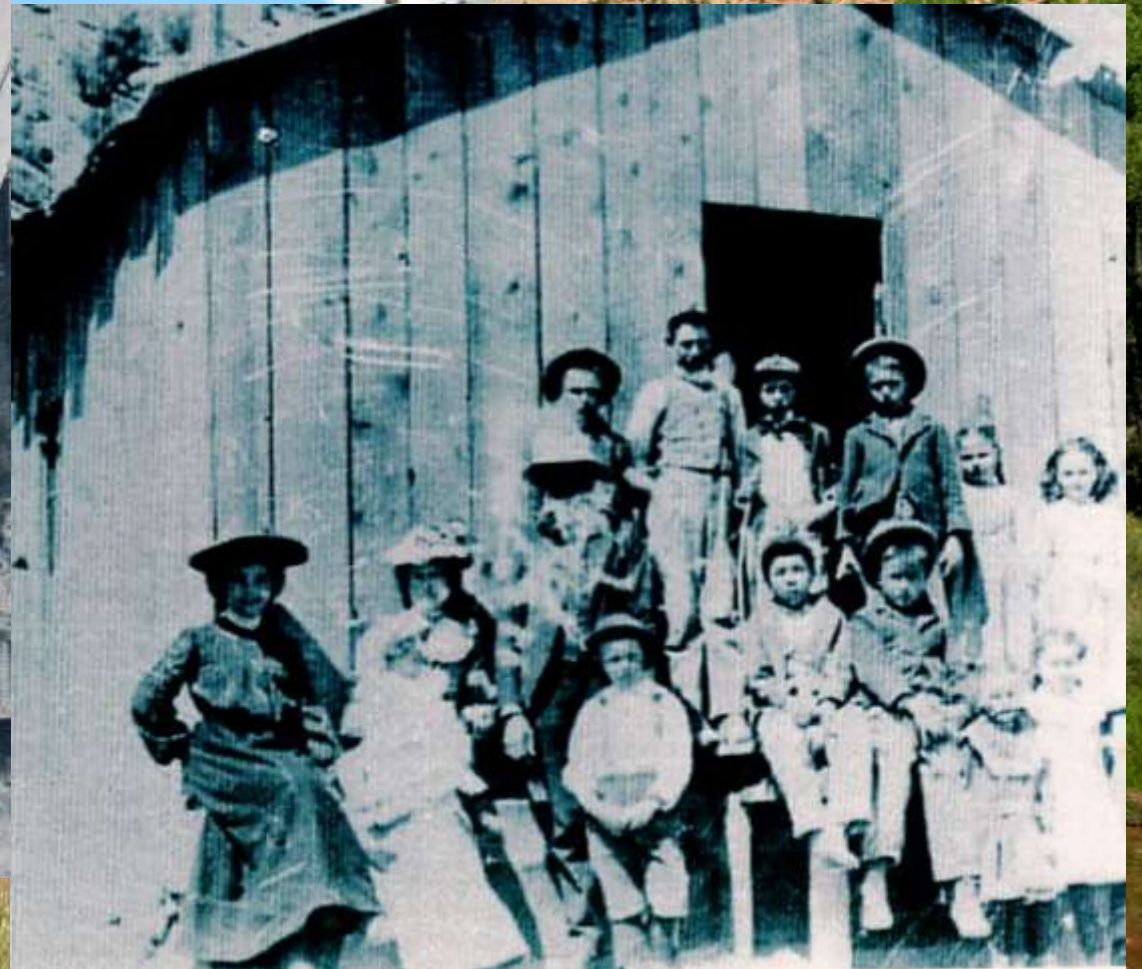
Opportunities Presented by the Colorado Co-operative Company to Secure a Home and Pay a Large Percentage in Labor.

The Colorado Co-operative Company presents to the unemployed of the overcrowded cities the most liberal plan for securing a home.

The tract selected for the Colony site is what is known as Tabeguache Park and is situated in the southwest part of Montrose county, at an elevation of about 5500 feet.

” No one will be ostracized on the account of politics or religion”

“ Our school will be second to none in the state”





The land was a fairly level stretch of ground located 300 feet above the San Miguel River with an ideal climate for agriculture



Tabeguache is a Ute word for “Sunny side of the Hill”

**He was instructed to move on the ground at once and begin laying
the foundation of what the men believed,**



**and still believe to be the most successful
cooperative in the world.**

First published in Denver; later at Pinon

THE ALTRURIAN.

VOL. 2.

DENVER, JUNE, 1896.

NO. 31.

HOW TO MANAGE A COLONY.

(The or Managers)
The colony must be a colony of men and women.
It is not a colony of men and women of the same class.
It is not a colony of men and women of the same race.
It is not a colony of men and women of the same religion.
It is not a colony of men and women of the same politics.
It is not a colony of men and women of the same education.
It is not a colony of men and women of the same habits.
It is not a colony of men and women of the same tastes.
It is not a colony of men and women of the same opinions.
It is not a colony of men and women of the same interests.
It is not a colony of men and women of the same desires.
It is not a colony of men and women of the same needs.
It is not a colony of men and women of the same fears.
It is not a colony of men and women of the same hopes.
It is not a colony of men and women of the same dreams.
It is not a colony of men and women of the same aspirations.
It is not a colony of men and women of the same ambitions.
It is not a colony of men and women of the same passions.
It is not a colony of men and women of the same emotions.
It is not a colony of men and women of the same feelings.
It is not a colony of men and women of the same thoughts.
It is not a colony of men and women of the same words.
It is not a colony of men and women of the same actions.
It is not a colony of men and women of the same deeds.
It is not a colony of men and women of the same lives.
It is not a colony of men and women of the same deaths.
It is not a colony of men and women of the same fates.
It is not a colony of men and women of the same destinies.
It is not a colony of men and women of the same destinies.

people, the people began fighting each other instead of fighting plutocrats.—*Edinburgh*

Winds peruse in Montrose county: Oats, 80 to 110 bushels; wheat, 40 to 60 bushels; potatoes, 300 to 500 bushels; corn, 40 to 60 bushels; alfalfa, 4 to 6 tons; timothy, 4 to 6 tons; sugar beets, 20 to 30 tons with 15 per cent moisture of 90 per cent purity. Beets, plant and pear: three produce from 50 to 100 pounds of fruit. The third year: Apple trees produce from 250 to 550 pounds the fifth year.

The *Common Nation* writes: "What benefit will the free coinage of silver be to the people? We ask, why is the money power so opposed to free silver? It will be of no benefit to the people. You can safely depend upon it that anything the money power is opposed to would be of benefit to the masses of the people. The Altrurian is for the free coinage of silver because it believes that the re-monopolization of silver at the rate of 16 to 1 will be

Personal

Mr. George Wright makes a capital statement at our Friday evening meetings, held at No. 427, Charles Block, 11th floor.

T. H. Hamilton says he would rather serve the colony than when compared than to own the First National Bank of Denver.

Mrs. Geo. Wright and friends of Denver, and Miss Mrs. Robinson of Los Angeles, will go to the colony on June 15 to look the ground over and locate land.

P. B. Hirsch of Pueblo, Colo., whose anti-semitic communication appears in this issue of the *Altrurian*, learned his lesson in the harness and saddle shop of Mr. Gallatin in Denver years ago.

T. G. Smith, who edited the *Al-*

TO THE MEMBERS OF THE COLORADO CO-OPERATIVE COMPANY.

Meeting:
On the 17th day of April, 1896, eight persons—John G. Otto, John H. Wetherby, H. H. Fife, Mrs. H. H. Fife, Wm. W. Brown, J. W. Van Dusen, L. L. Gilford and A. H. Wetherby—were expelled from membership in the Colorado Co-operative Company by the Board of Directors. On the 21 day of May following, this action of the Board of Directors was approved at a meeting of the resident members by a vote of twenty-four to two—three refusing to vote and five being absent. This action was taken because the persons expelled were fault finders and mischief makers, and had openly avowed their determination to never cease their opposition to the present administration until the plan of the organization was changed according to their ideas. They proposed to change from a corporation whose business is managed by a Board of Directors to an association

NOTICE TO STOCKHOLDERS' SPECIAL MEETING.

Pinon, Colo., April 3, 1900.

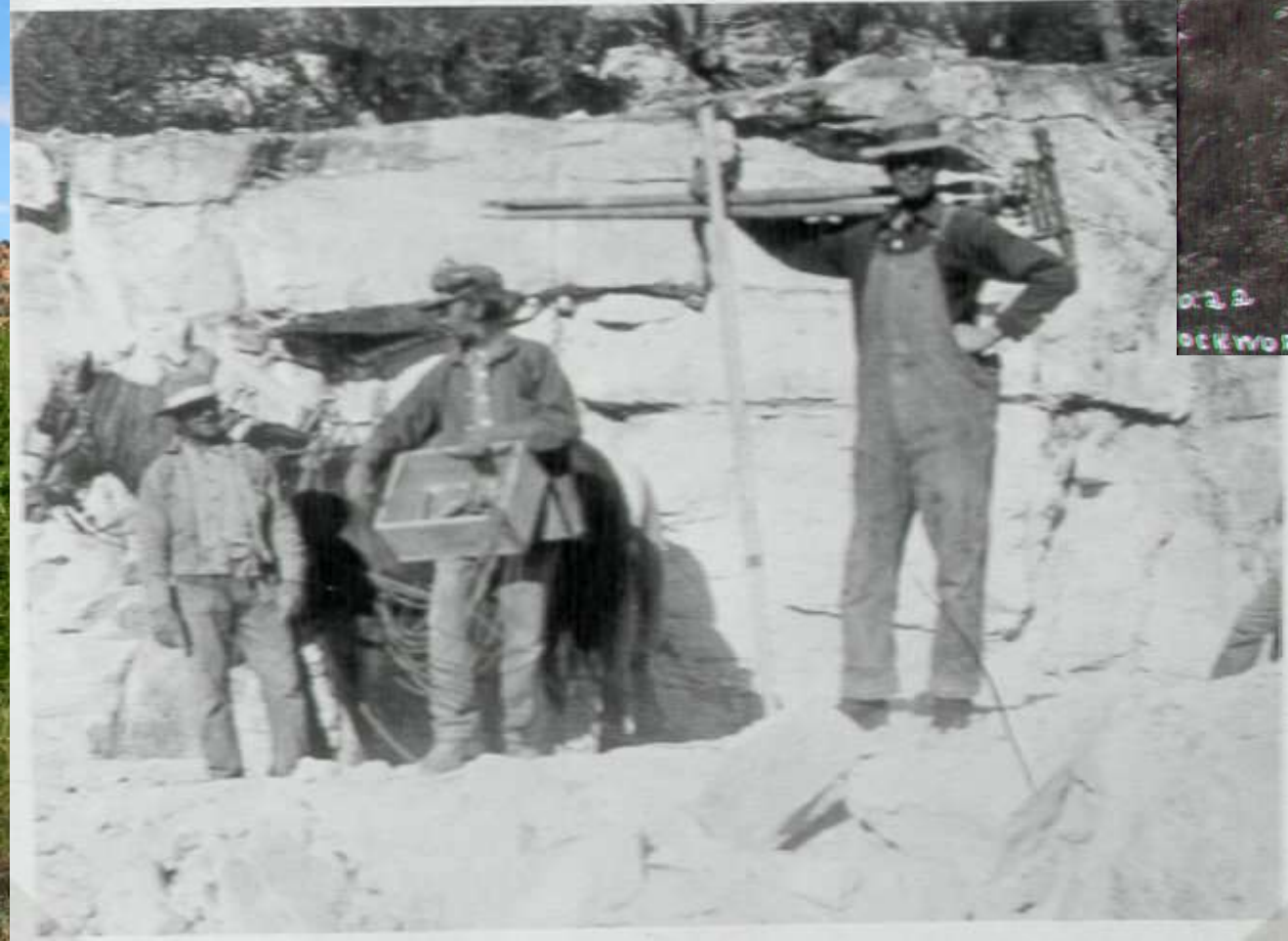
A special meeting of The Colorado Co-operative Company will be held on the 18th day of May, 1900, at 10 o'clock a. m., at the Company's office in Pinon, Colorado, to amend Article 6, of the Articles of Incorporation as follows:—

Proposed Amendment to Articles of Incorporation:—That Article 6 of the Articles of Incorporation be amended by changing the place of the principal office from Denver to Pinon, in Montrose County, Colorado, or at such other place in Montrose County as may be designated by the By-Laws.

By order of the Board of Directors.
J. H. BRAMMEIER, President.
JAMES COOPER, Secretary.

In the fall of 1895 the High Line canal was finally surveyed, platted and filed according to law.





012
OCKWORK ON C.C. CO'S DITCH 1 MILES BELOW PINON





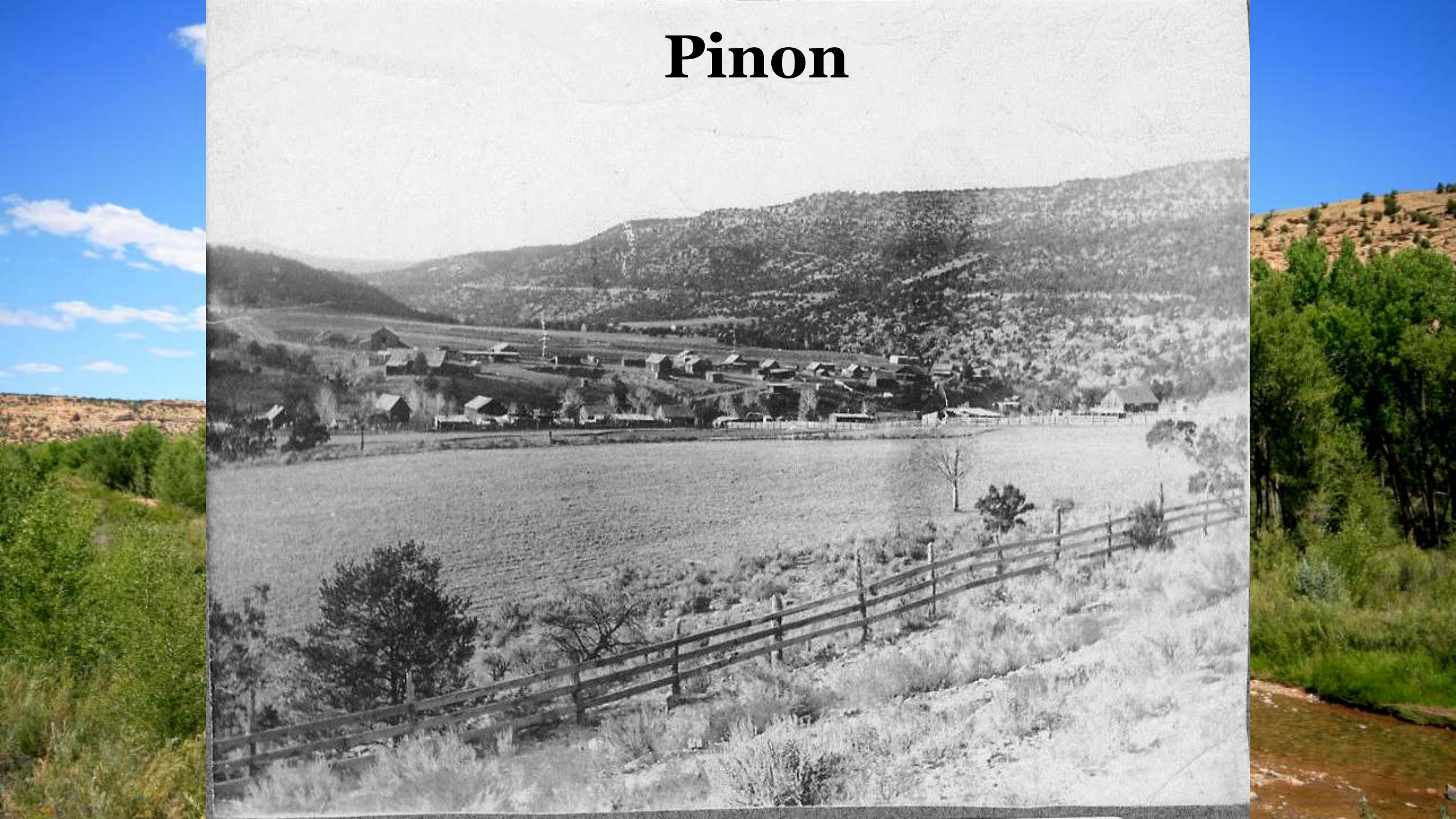
Flume C. C. Co. ditch -- Horse shoe bend.
82. P 18 # 1.



Logging for the sawmill

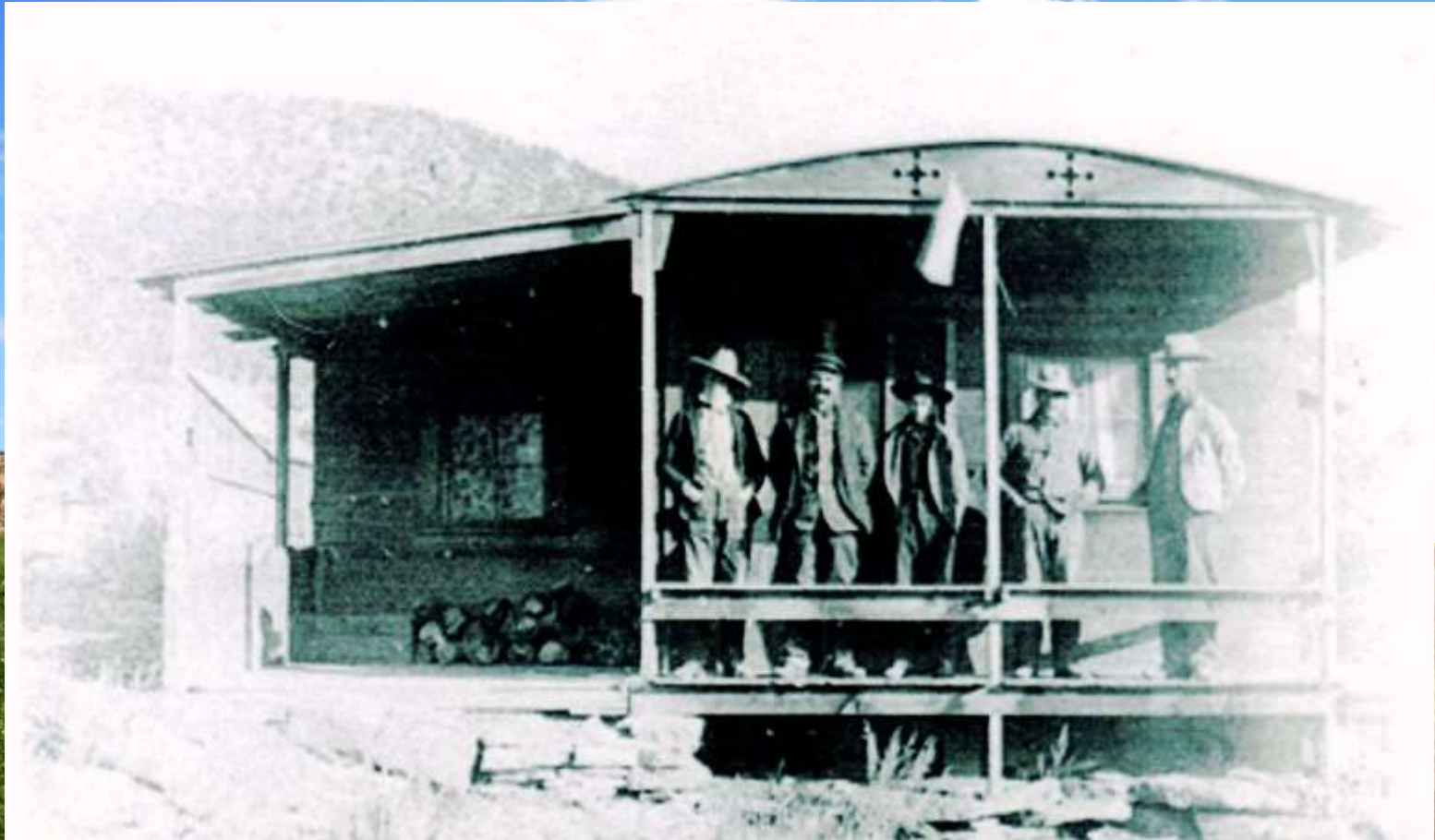


Pinon

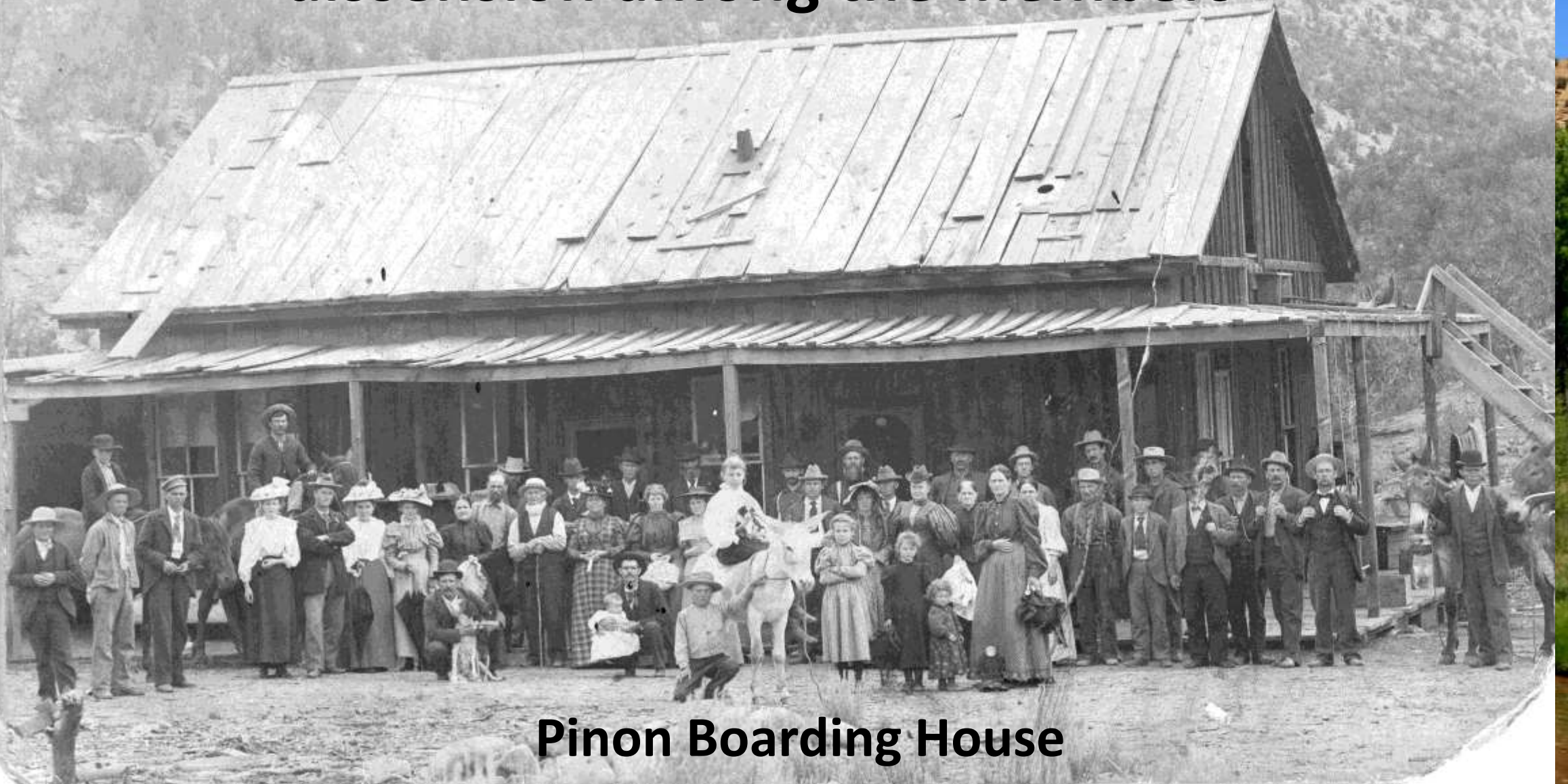




Dr. Springer's Office



**The Saturday night dance was a cure all for any
dissension among the members**



Pinon Boarding House

The colony indulged in cultural activities such as “Literary” evenings, a drama club, musical programs, ethical talk and poetry recital.



Women's Club



Embroidery Club







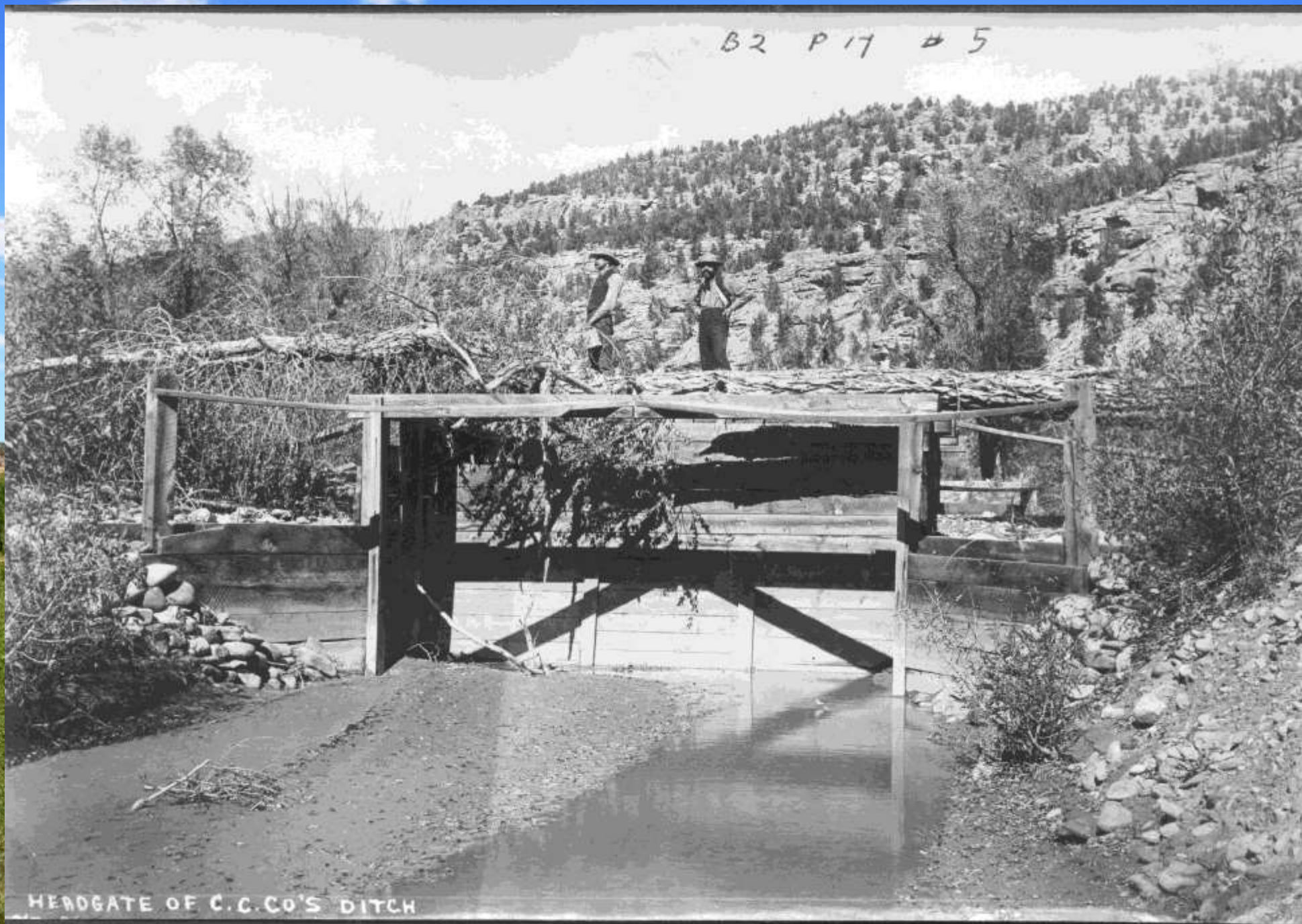


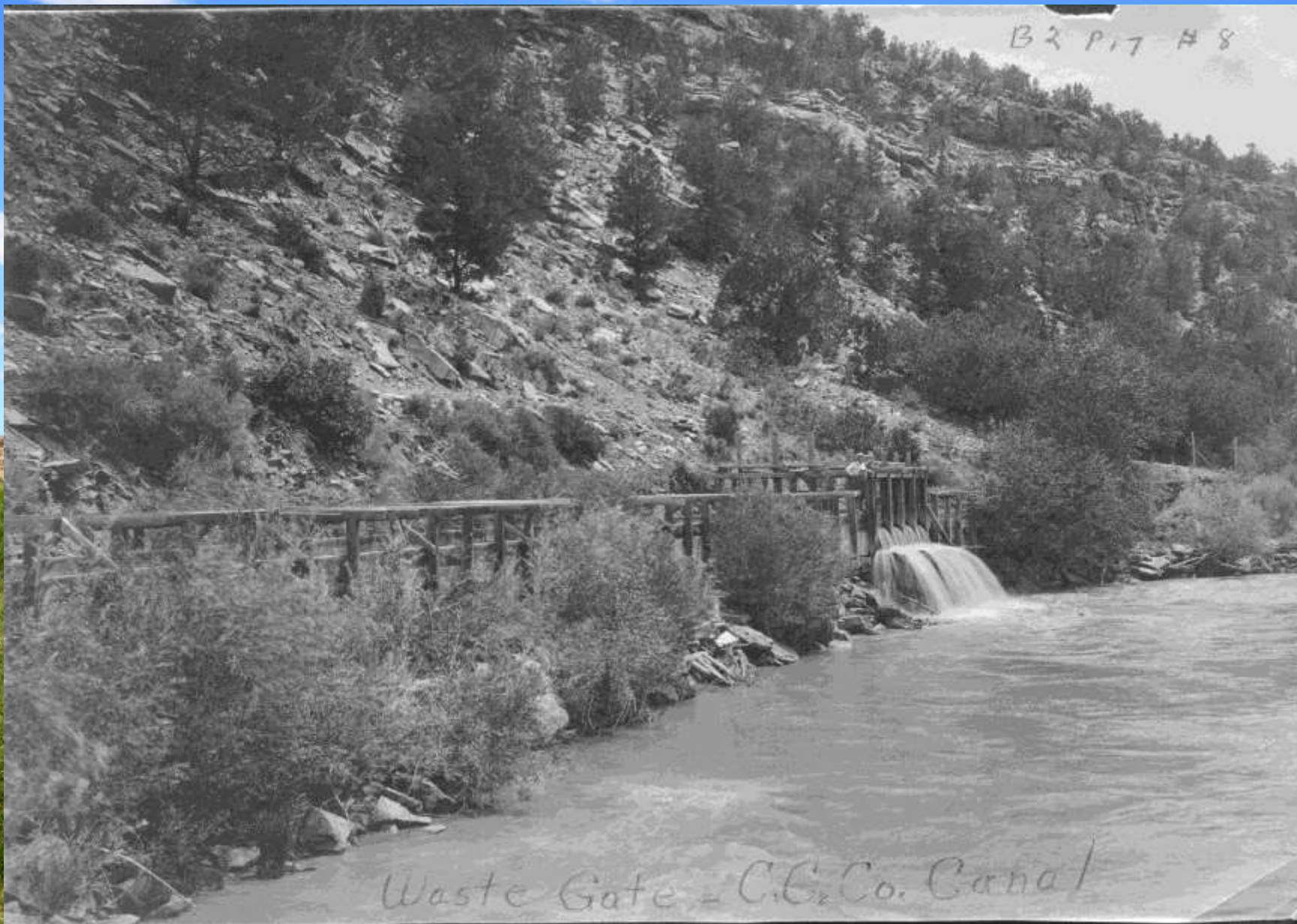
In 1897 the work began on the Cottonwood Trestle



Sarah Chamberlain

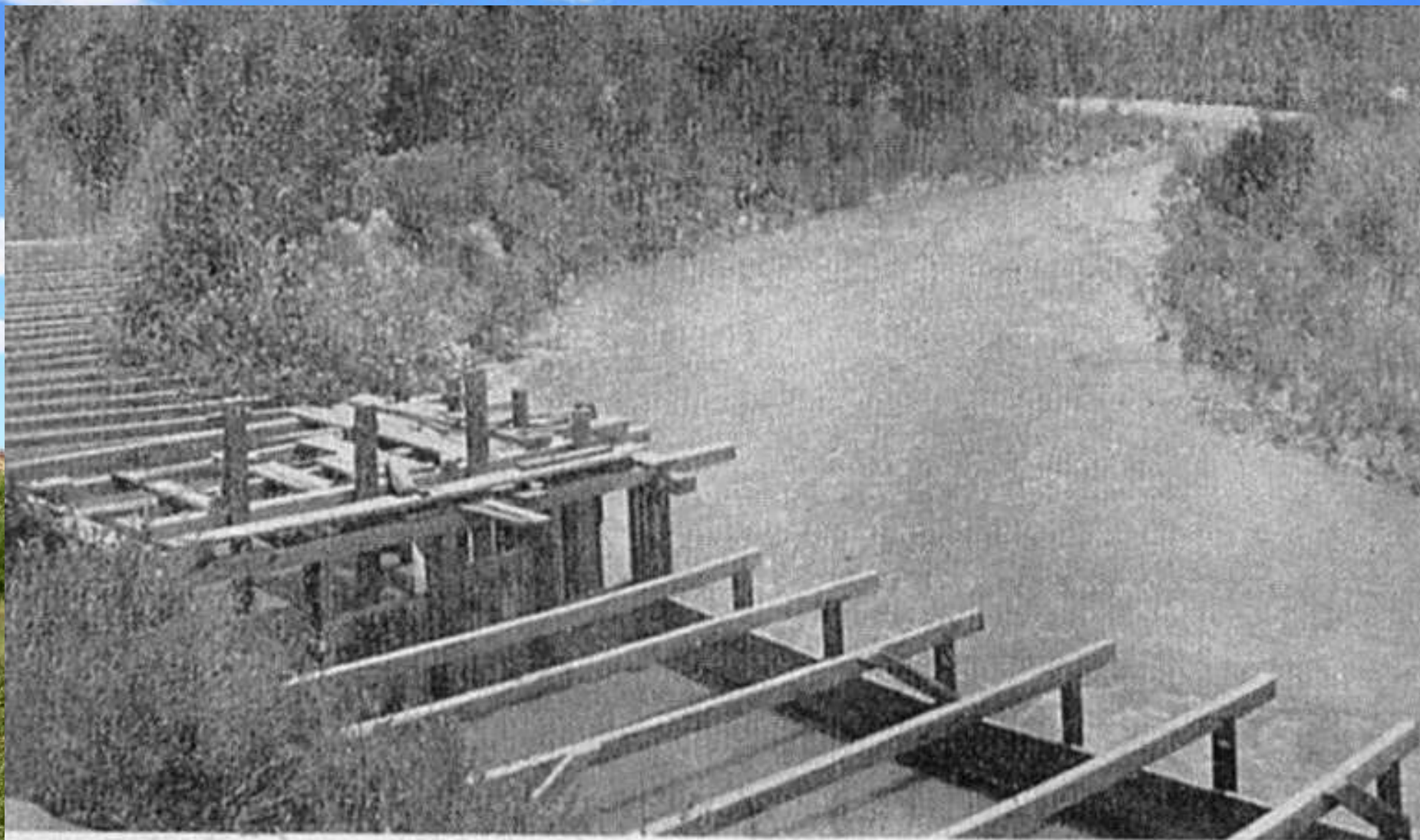






B2 P17 #8

Waste Gate - C.C. Co. Canal



WASTE GATE C. C. CO. CANAL & SAN MIGUEL RIVER.

Pub. by J. C. Swan, Nucia, Colo.





PINON CEMETERY

Jim Cooper
Julia Barnes
Ed Whitney
Frank Hutchinson
Minor Dunn
Mr. Riehl
Lester Gibbs baby
Jake Doblers twins
Fleisy baby
Miles Bower baby
George Speck baby
Osceola Ages
Charlie Herth baby
Mr. Rigney
ROY WARNER

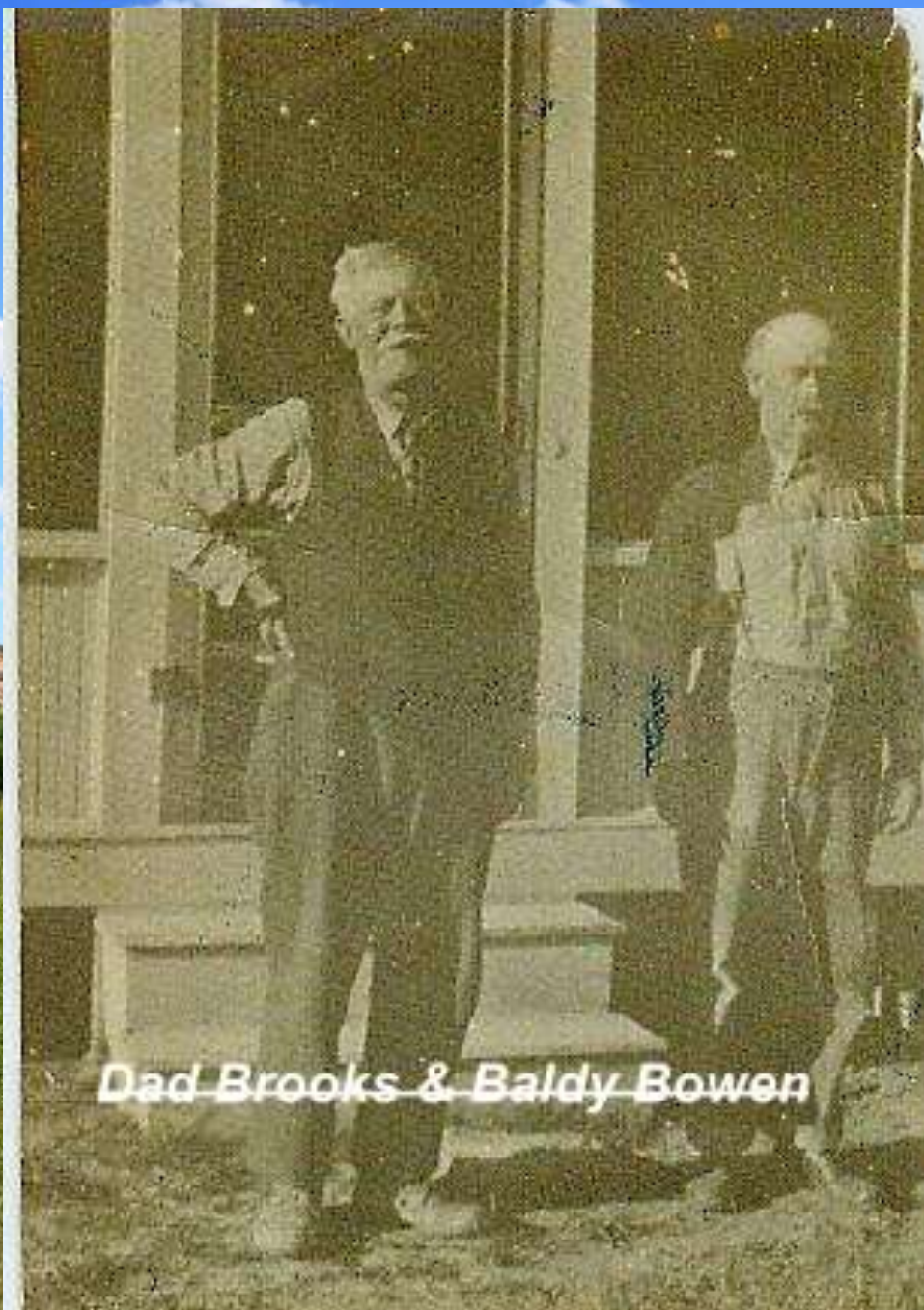


M.D. Bowen



M.D. Bowen and crew





Ladies without bloomers not allowed on the beach



Tourists without baggage must pay in advance

Head gate camp

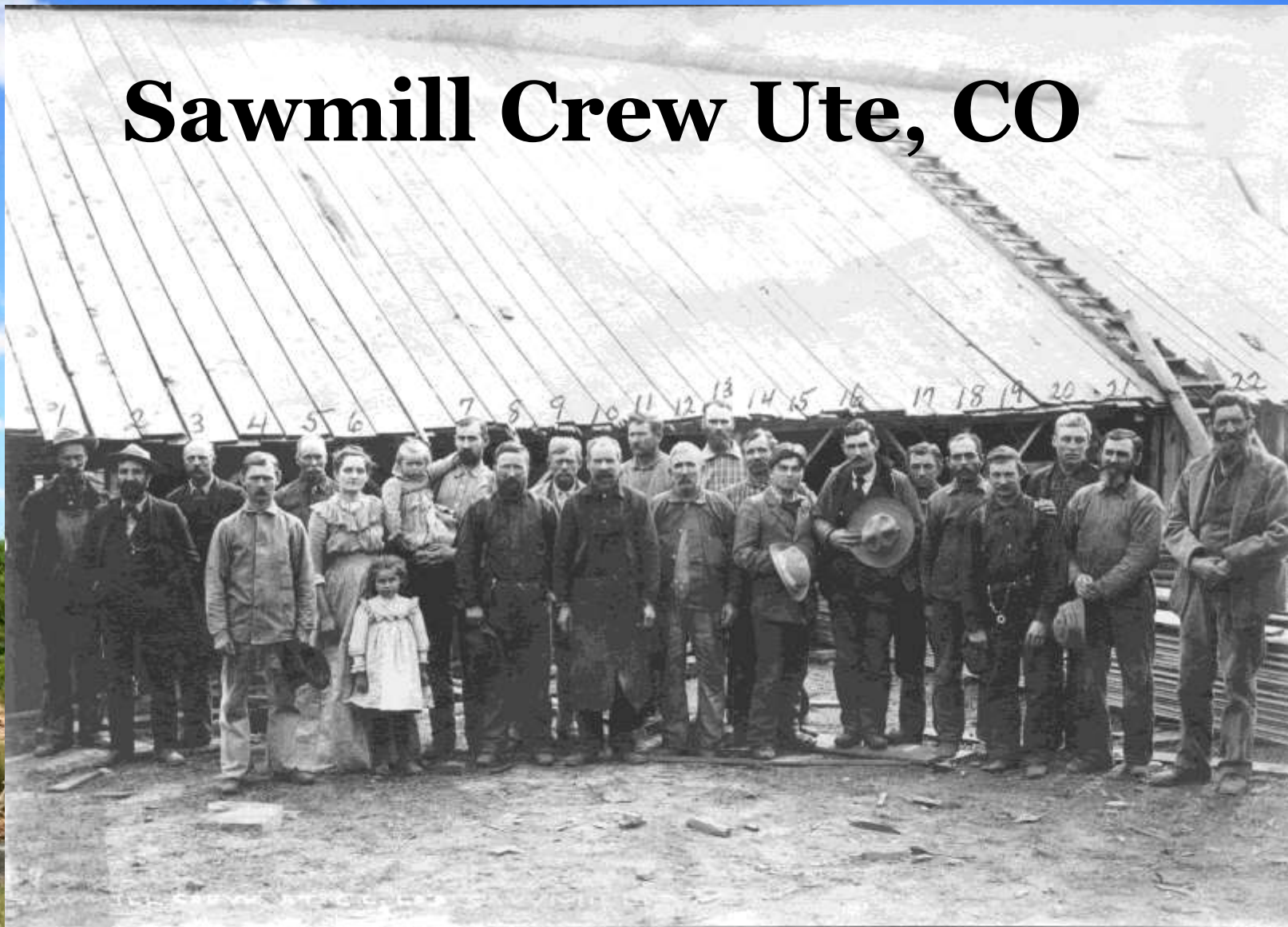


Loveland Camp “Power plant hill”



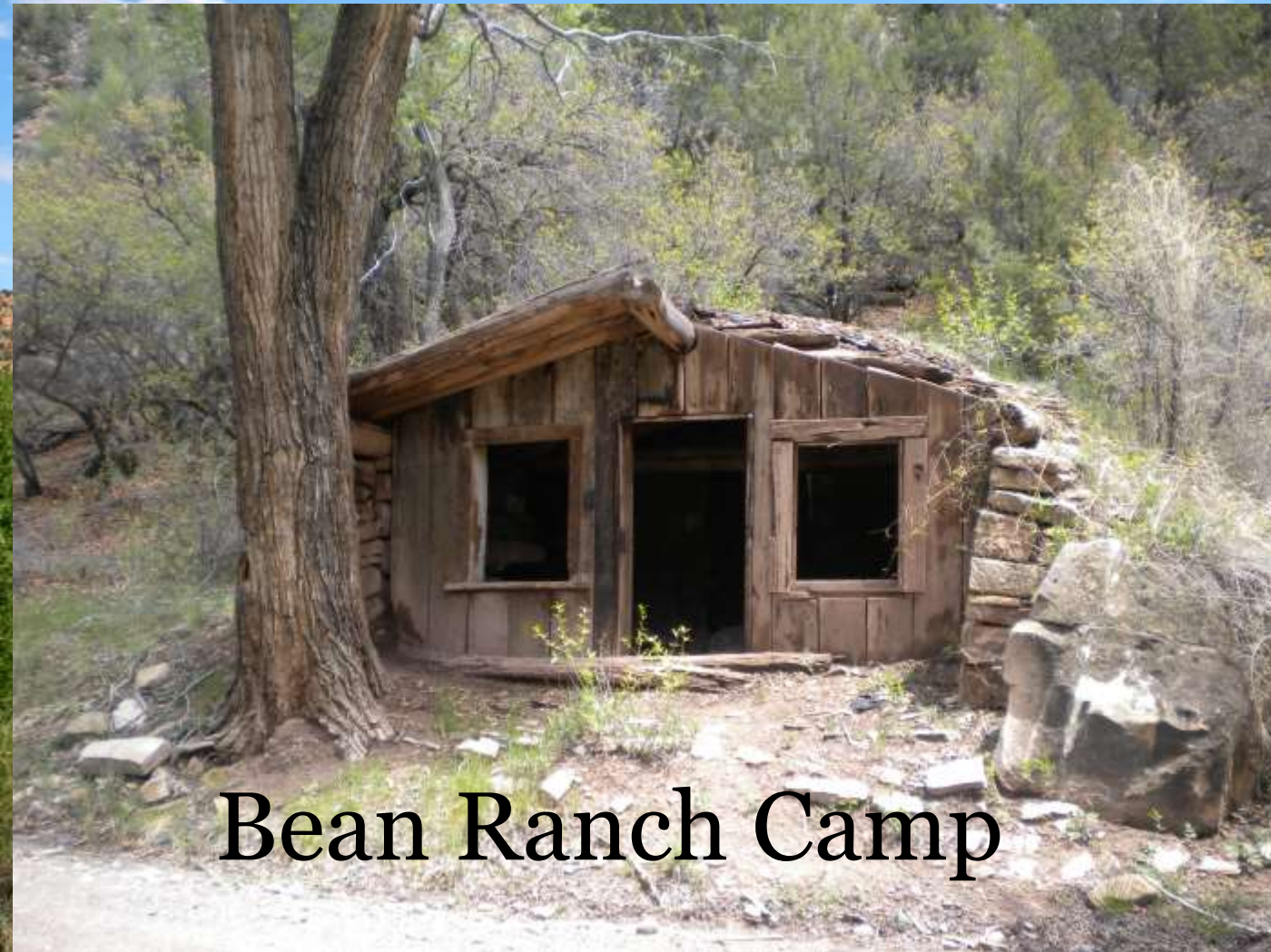
Bk2,pg19,#16.Loveland,last ditch camp at Brooks Bridge

Sawmill Crew Ute, CO

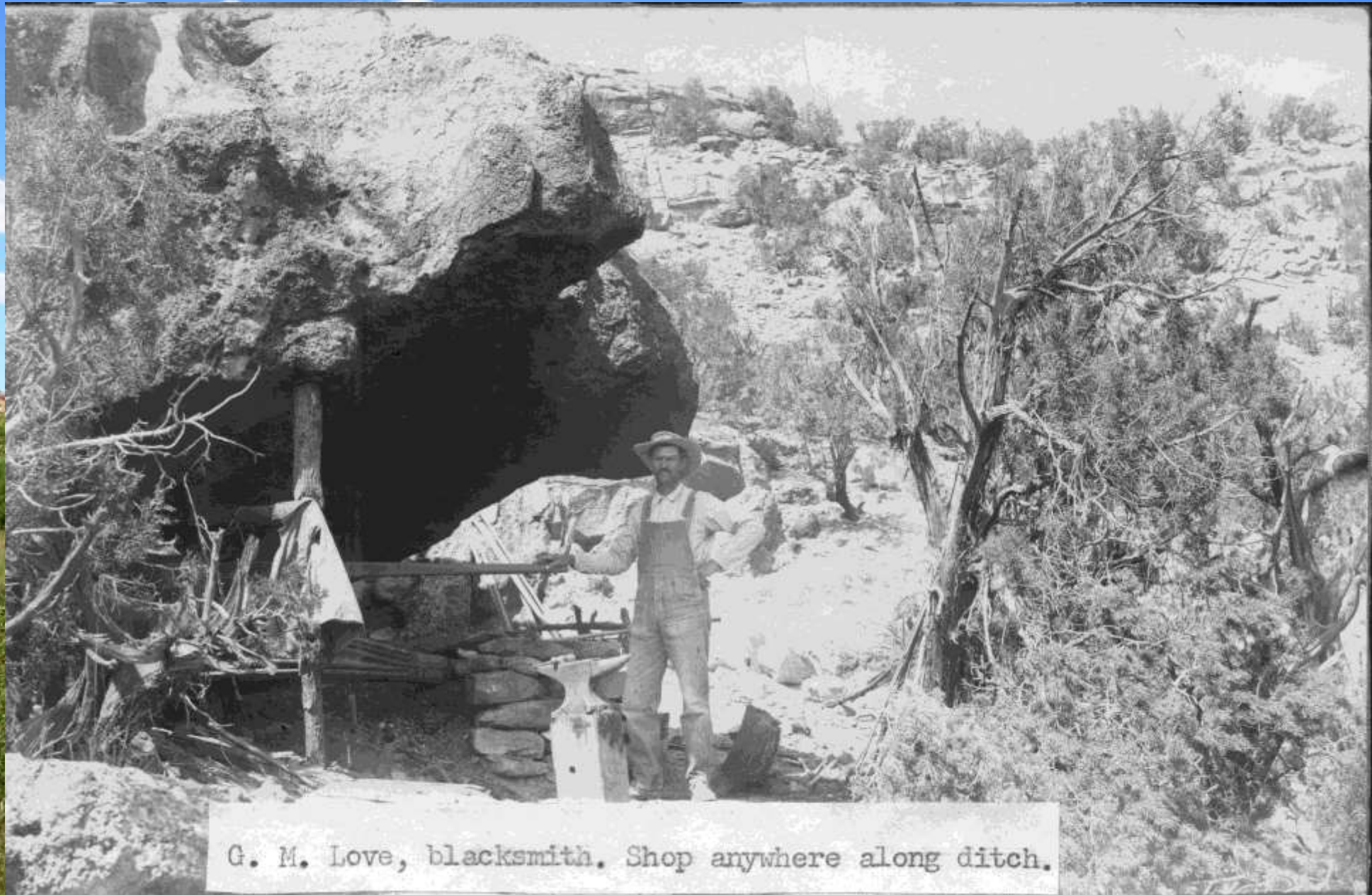


C. C. Co. Sawmill Crew, Ute, Colo.
L. to R. 1. Canfield, 2. --- 3. Logan, 4. Tawney, 5. Gile, 6. Mrs. Fredericks,
7. M. Fredericks, 8. Price, 9. Deleplane, 10. McDonald, 11. Venstrom, 12. ---
13. Robinson, 14. --- 15. Karsh, 16. Specht, 17. Cox, 18. Vestal, 19. Ubell
20. Zatterstrom, 21. Gilbert, 22. Daddy Dunn, Sawyer. B2916 # 9

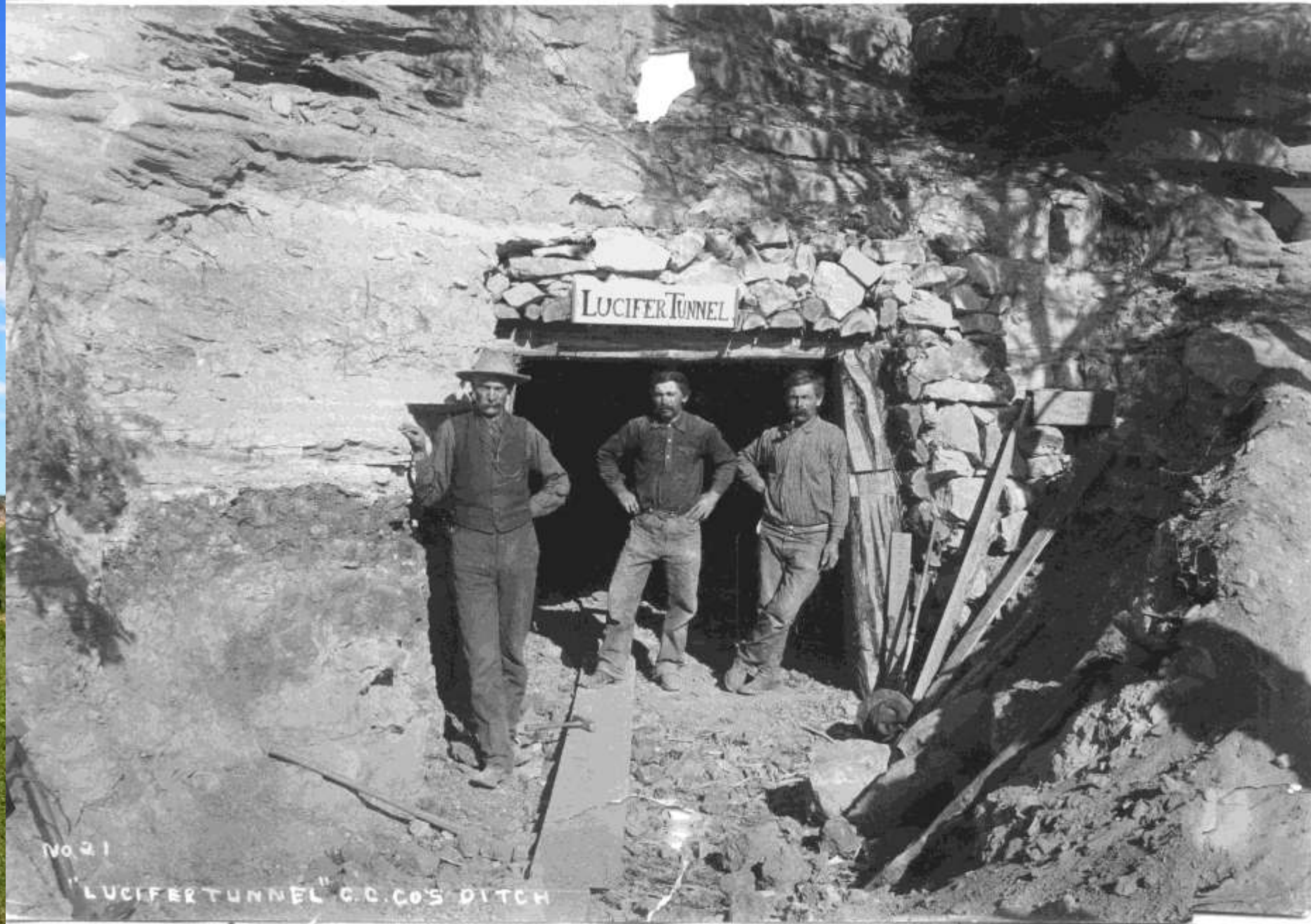
The Bean Ranch consisted of several acres of river bottom that the colonists used as bean fields.



Blacksmith G.M. Love



G. M. Love, blacksmith. Shop anywhere along ditch.

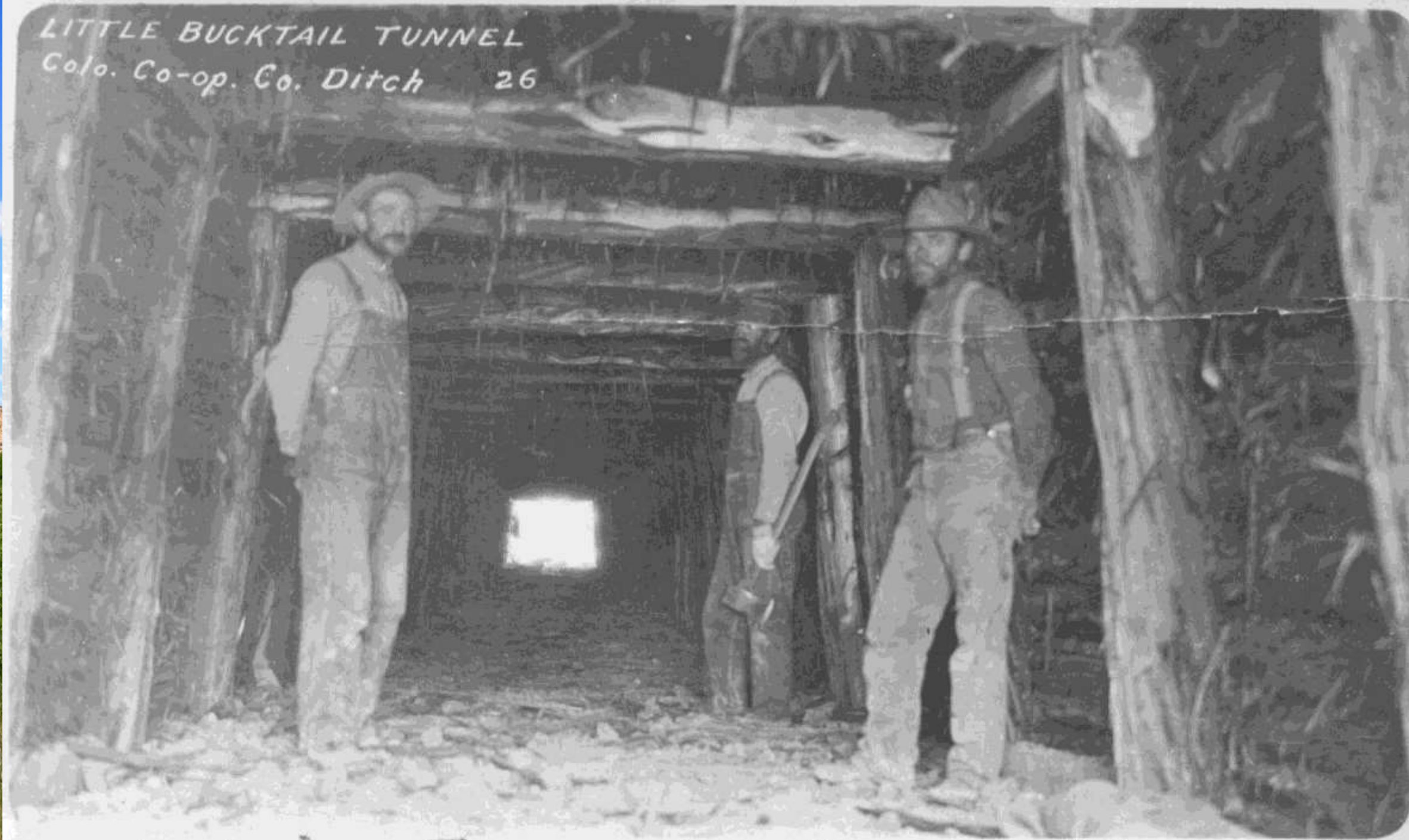


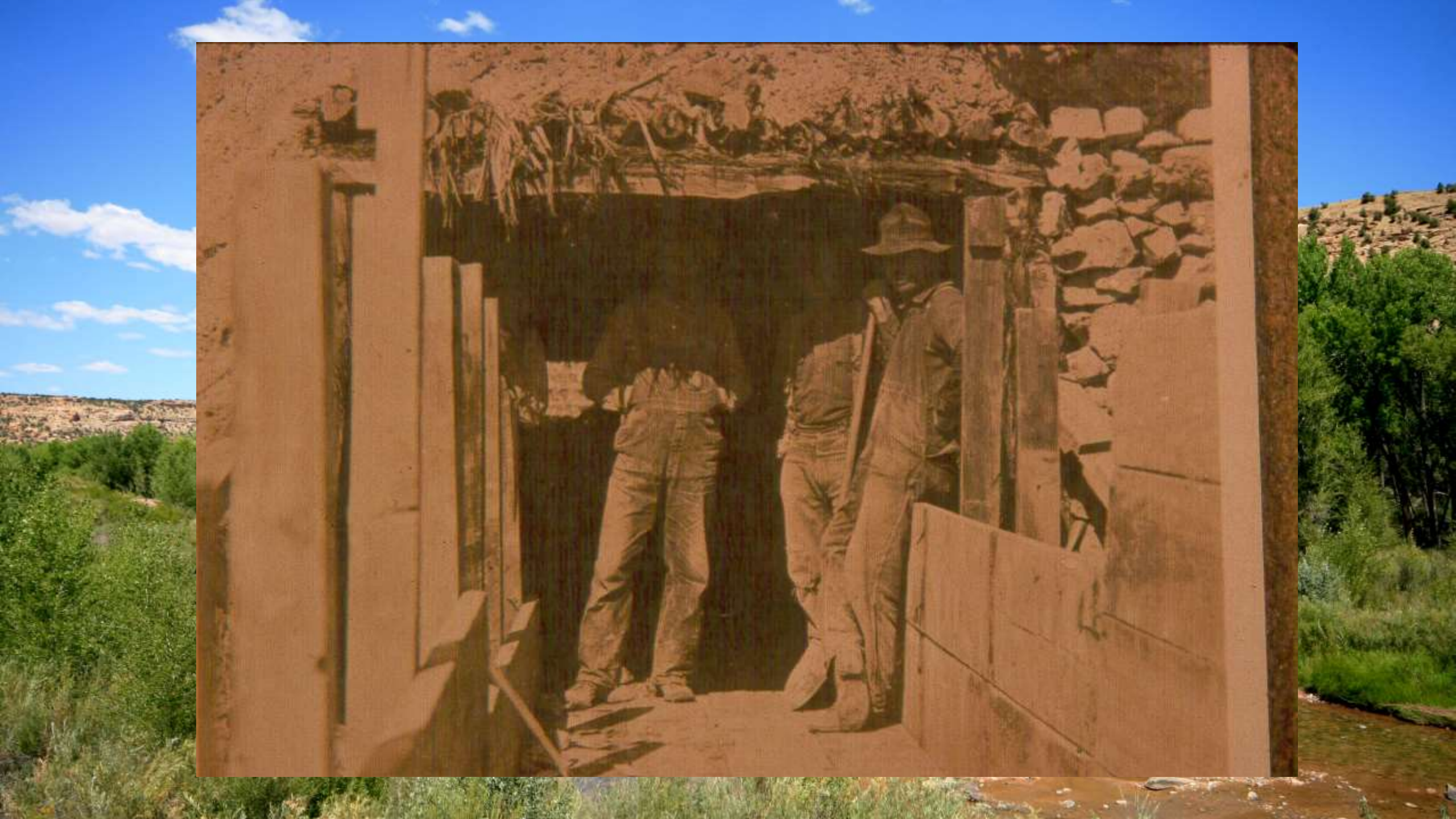
M. J. Winters, John Reindl, Billy Albrecht

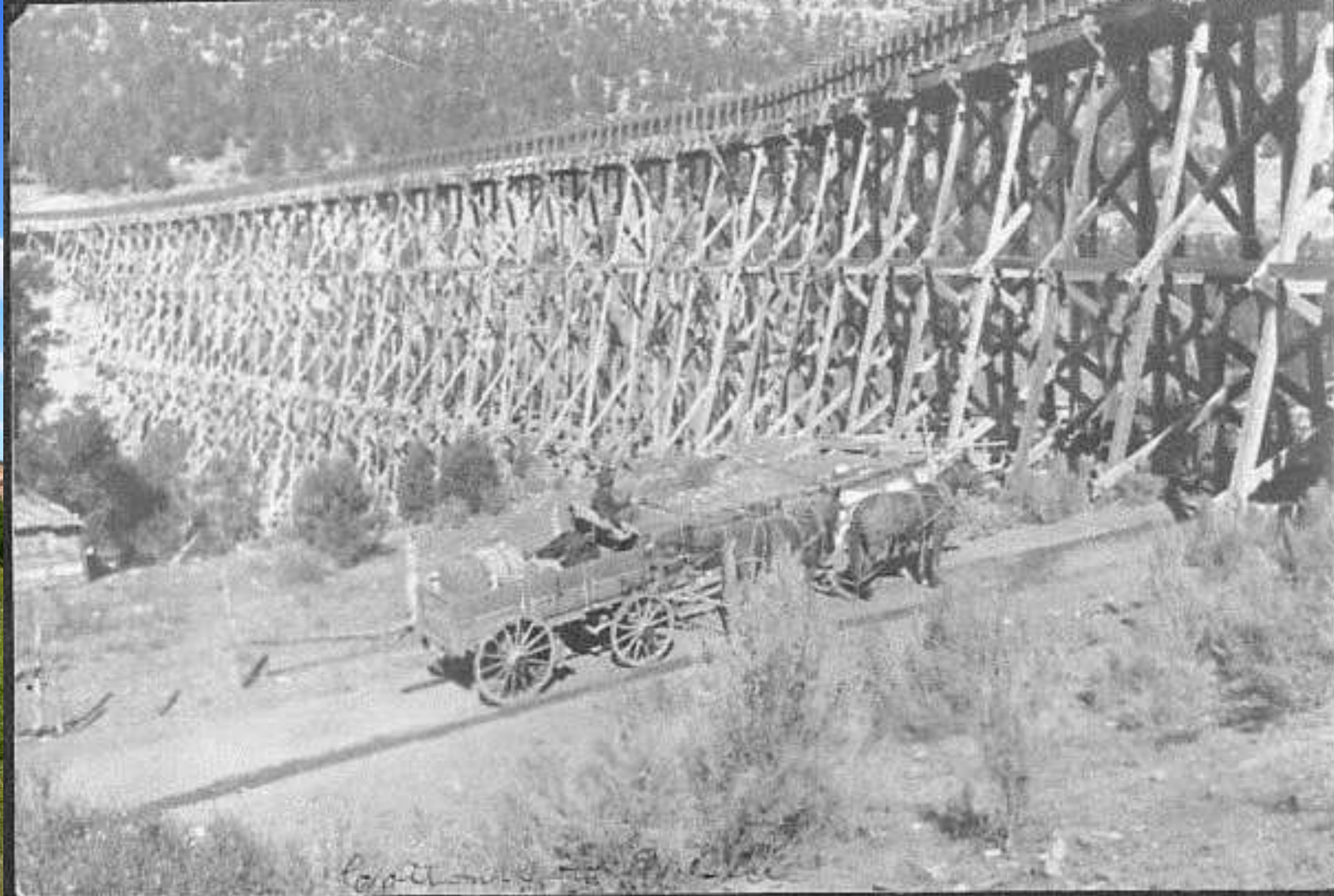
B 2 P 7 K 11



LITTLE BUCKTAIL TUNNEL
Colo. Co-op. Co. Ditch 26







B2P18#2

No. 16

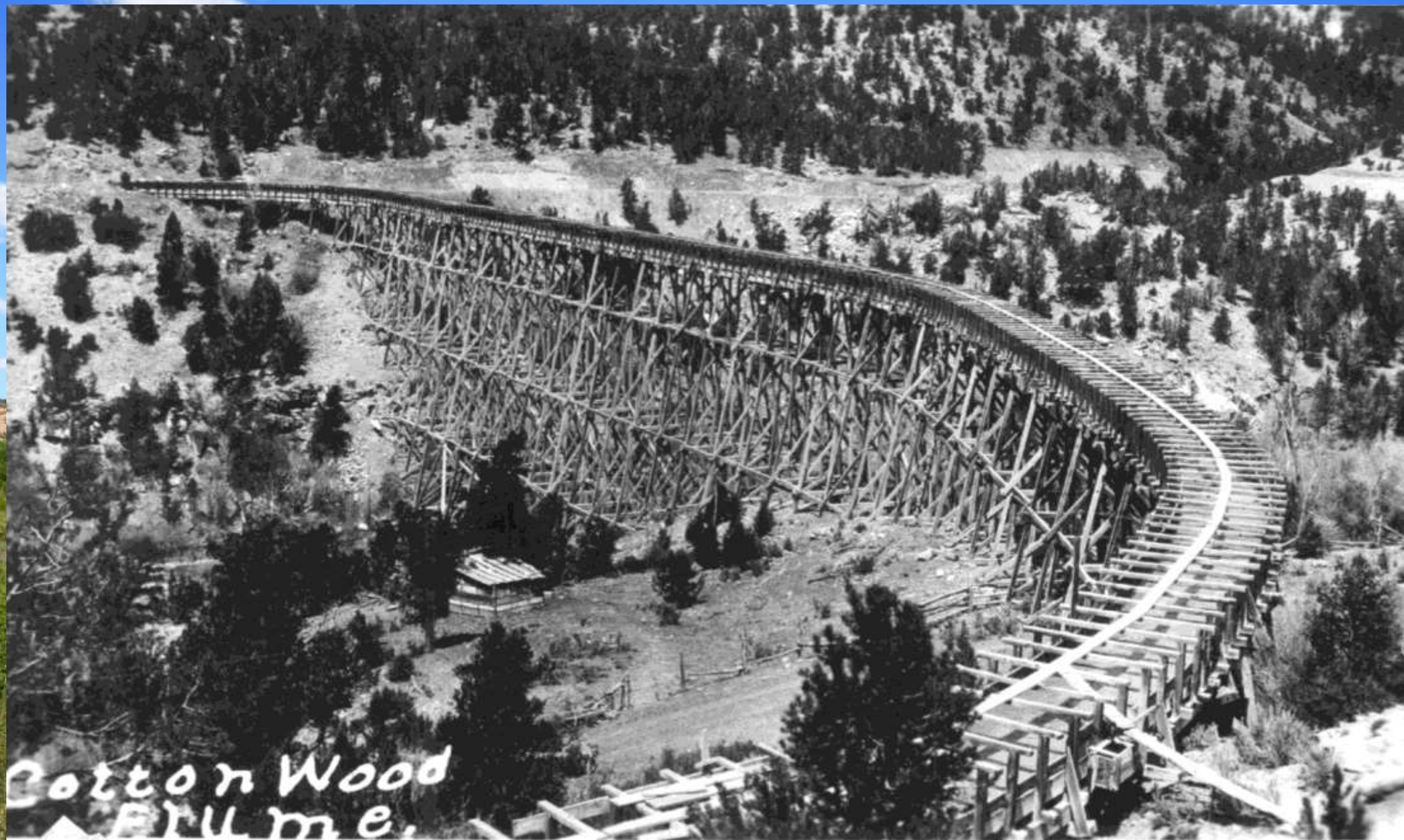
COTTONWOOD TRESTLE LOOKING NORTH





“Clearwater” Lou Lacher







10 FEET HIGH -
100 FEET LONG -
COTTONWOOD TRESTLE

O.C. CO. MONROSE CO. COLO.



D2 P31 H 6



NUCLA COLO. LOOKING NORTH

1910





B2 P31 H 9

NUCLA AND VIEW ACROSS TABEQUACHE PARK - COLO.

Nucla looking south



OUR LOCATION.

The site selected for our town is centrally situated on rising ground, near the main canal, and commands a splendid view of valley, plain and mountain. Those appreciative of magnificent scenery, a mild and healthful climate, and an intelligent and progressive community in which to dwell, will find in Nucla their ideal for the founding of a good home.

Those wishing to engage in business will here find an inviting field. The speculative feature pertaining to the disposal of town lands, being entirely eliminated, the investor will not meet with a "hold-up" before he can engage in business, but may have practically all his capital to put in his stock.

Space in this little booklet forbids an enumeration of the various enterprises which this new settlement will in a short time demand and furnish abundant means to sustain. Those interested should either make a personal investigation, or correspond with the secretary, always enclosing postage to prepay reply.



B2 P31 4.7



NUCLA - LOOKING SOUTH.

NOTICE

Stockholders Meeting

Notice is hereby given that a special meeting of the stockholders of The Nucla Town Improvement Company will convene at the company office, Nucla, Montrose County, Colorado, August 2, 1909, 10:00 o'clock a. m., to vote upon the question of \$2500 loan for the purpose of completing and seating hall, street improvement, completing reservoir, and purchase of real estate.

F. B. LOGAN,
Secretary.

C. E. WILLIAMS,
President.

C. E. WILLIAMS, President *Report of Treasurer to date* F. B. LOGAN, Secretary

The Nucla Town Improvement Company

Capital Stock, \$50,000.00

1000 SHARE ENTITLES HOLDER TO LEASE OF ONE BUSINESS LOT OR TWO RESIDENCE LOTS FOR 99 YEARS WITH PRIVILEGE OF RENEWAL

Nucla, Colorado, Nov. 30

190

Received		Disbursed	
School	183	Insurance J. Hall	4
Yc Paults	383 10	" School	2
Town Hall	84 95	Fire Extinguishers	33
Cemetery	10	Expense Photocopy P. B.	
Survey & Transfer	27 50	Printing 1430	24
L. Vestal, Mgr.	30 00	Town Hall	32
F. B. Logan Yc of Loan	71 8 11	A. P. Standley	68
	108 10	Jackson L. & Trust Co.	270
		Taxes	218
		Interest	00
		Jno. Mc Glynne, refund and	132
		abstracts	92
		F. B. Logan	4489
		A. McDonald (amort)	4100
			828 65
	528 65		
		F. B. Logan	
		Secretary	

Road Construction





Bk 2 P 31 H 1
Original Nucla Merc. Co. 1905
Chas. Williams & Alex Nicholson on wagon.

C.C.C. Office July 4, 1916



Photo-By
Smith











Nucla's one outside public telephone sits beside the company's building. The firm, with 937 subscribers, has

operated at the same rate since 1958 and has asked the Public Utilities Commission for an increase on the rate.

Nucla-Naturita Telephone Co. To Build New Office

Thelma L. Tomlinson, president of the Nucla-Naturita Telephone Company, has announced that final plans for a new commercial office, warehouse and vehicle storage building has been completed after two years of preparation.

The new building, to be located on the south east corner of Fourth and Main, is of the quality, explained Mr. Tomlinson, to be an attractive addition to Nucla's Main Street. One feature of the new office space is to accommodate for the handicapped by special parking, ramp entrance and wide doors for wheel chair convenience.

The Nucla-Naturita Telephone Company anticipates that bids to construct the new facility will be opened in approximately 30 to 45 days.

The company's manager, Mr. Tomlinson, said that "better service and much need space" are the main reasons the company has decided to expand. "We hope to eventually provide for any who desire one party service," said Tomlinson.

The Nucla-Naturita Telephone Company serves Nucla, Naturita, Paradox, Uravan, Gateway and surrounding areas. The Company was incorporated in 1956 and has been under present

management since 1958.

One more reason the Company is looking towards new facilities is to help mitigate growth impact. "We have felt growth demands in the area more over the last six months than every" Tomlinson said.



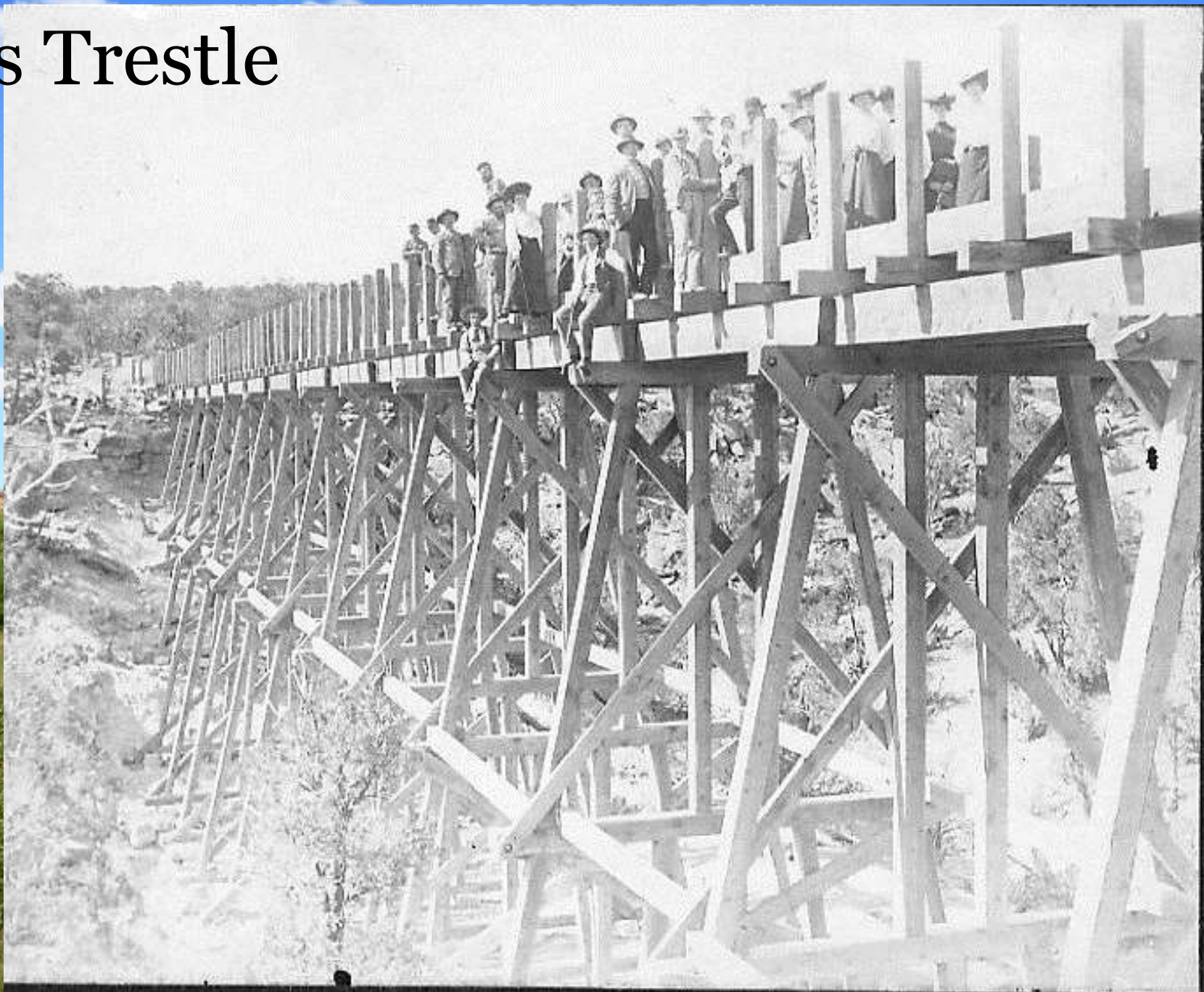
This is the site where the Nucla-Naturita Telephone Company plan to construct their new facilities.

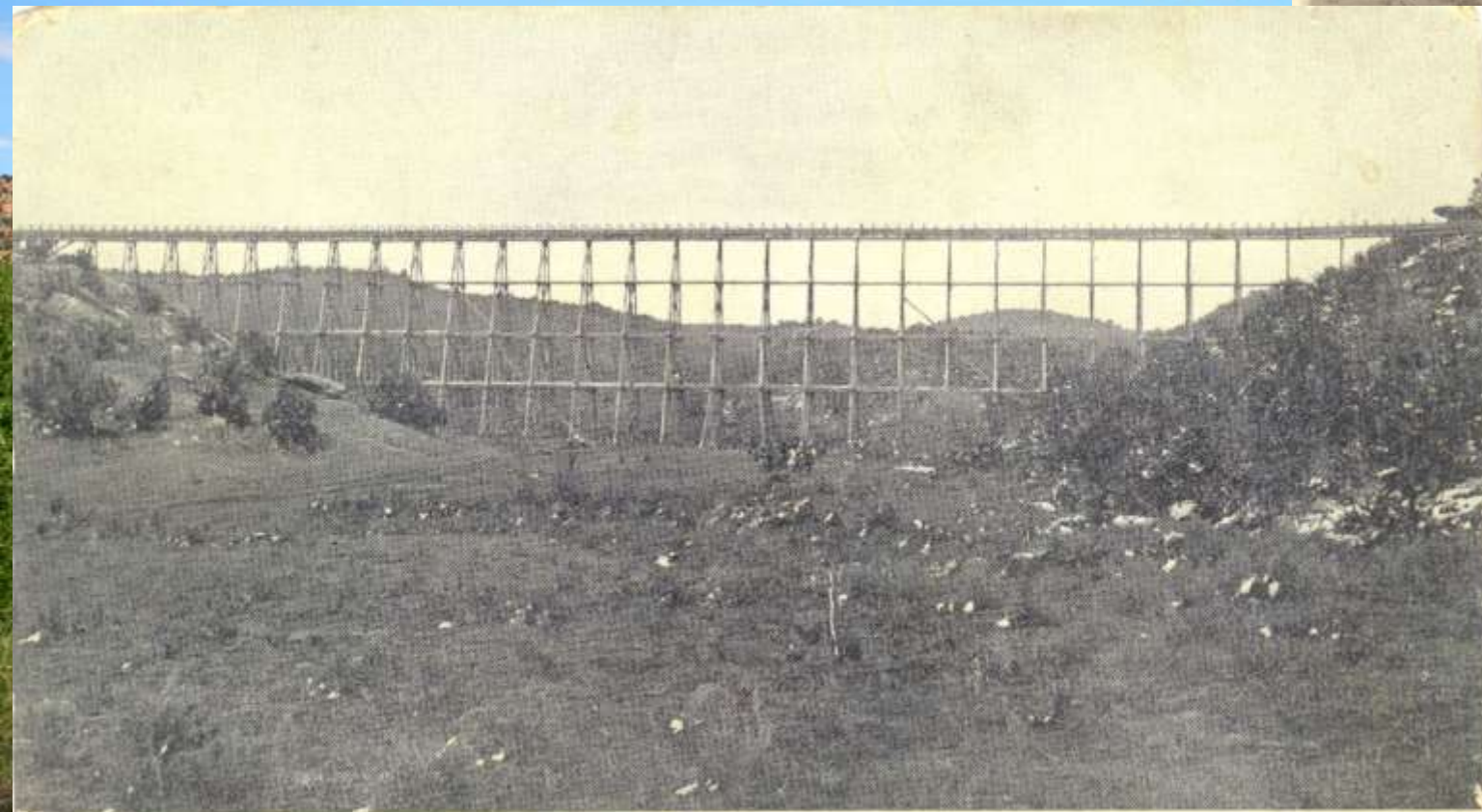


Final design for the new Nucla-Naturita Telephone Company building.



Brooks Trestle





TRESTLE C. C. CO. CANAL 73 FT. HIGH, AT NUCLA, COLO.

Pub. by J. C. Swan, Nucla, Colo.







Tuttle Syphon Flood 1922



Tuttle Draw Syphon

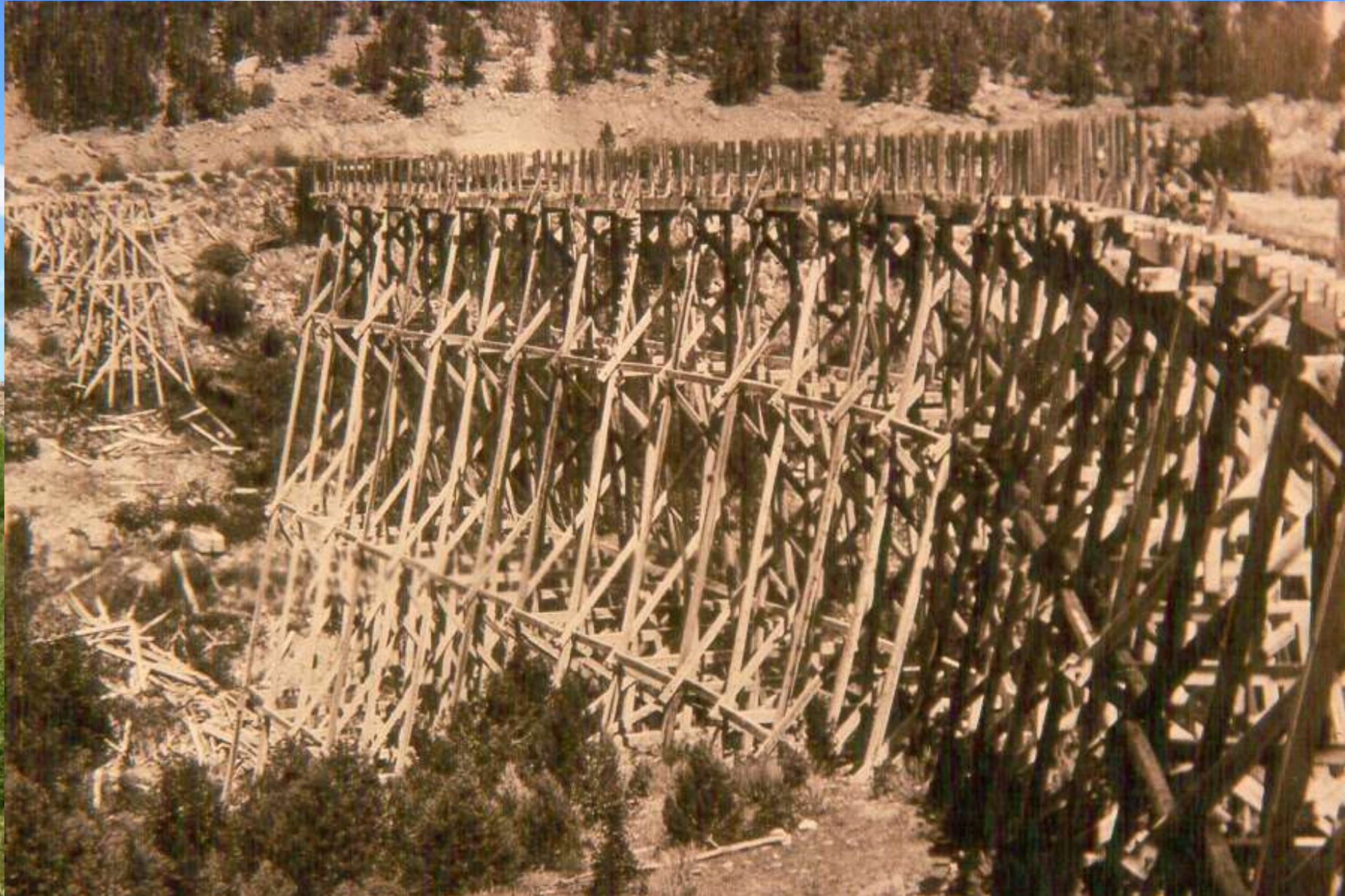


Tuttle Draw



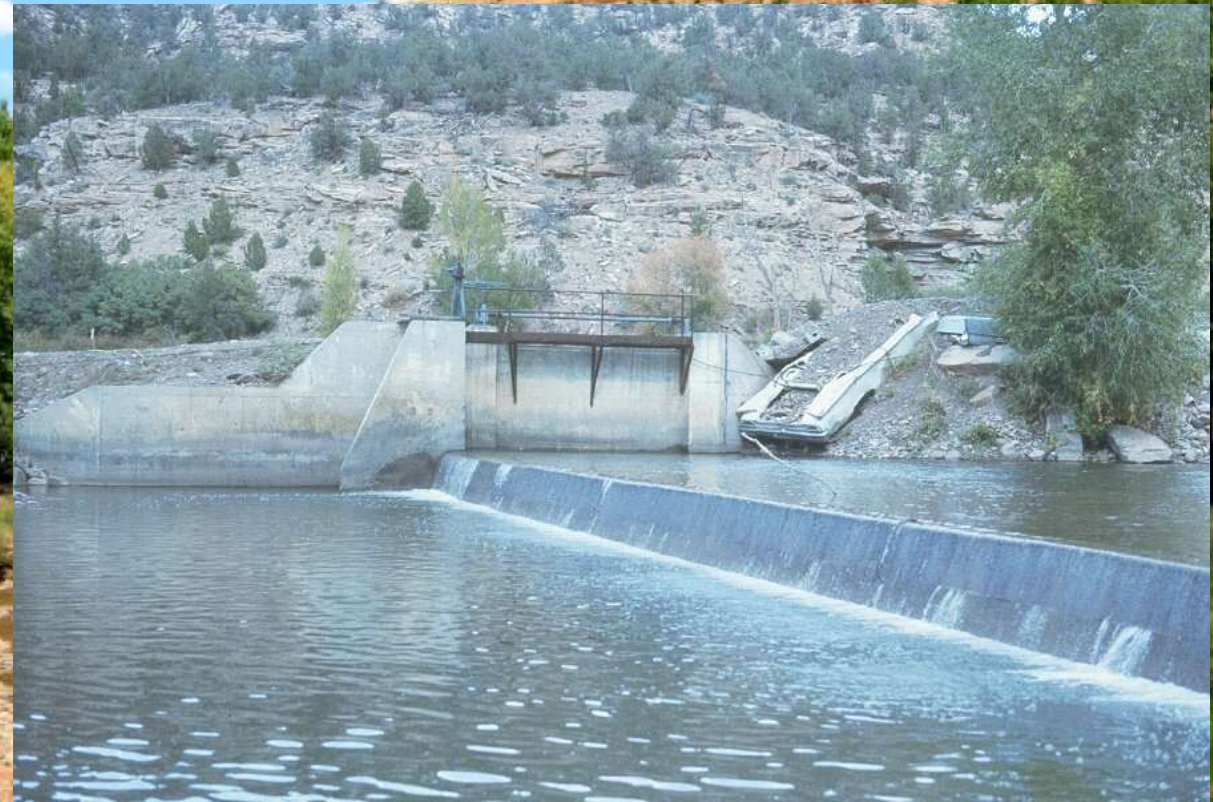


Cottonwood Trestle Break





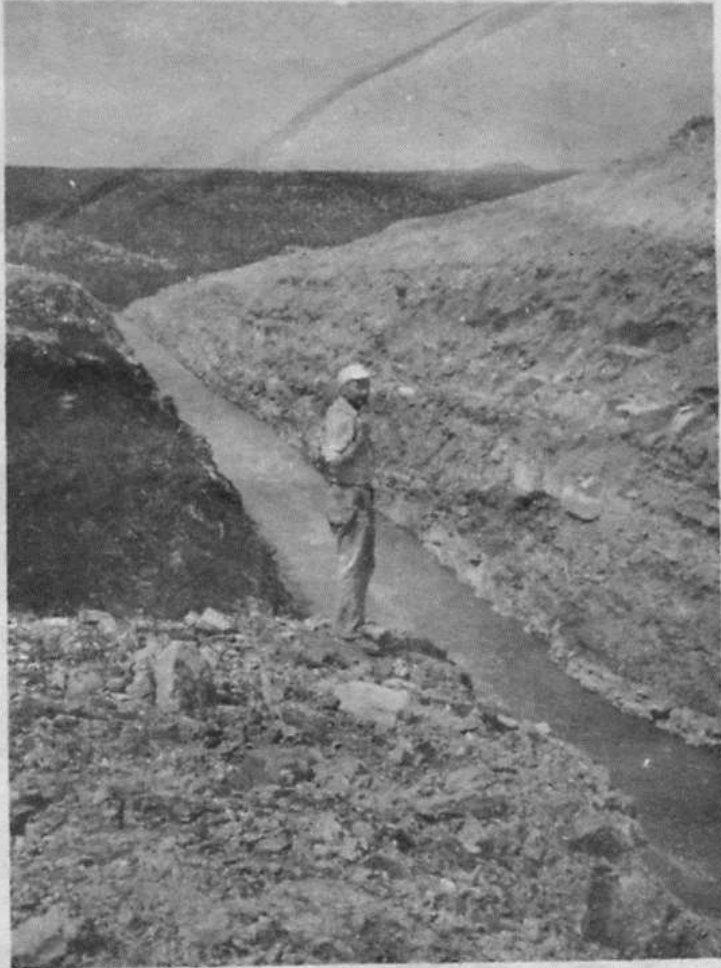
New head gate 1967



Bucktail Tunnel Cave In



Colorado Co-op's Big Bucktail Cut Will Provide Farmers More Water



Above — Louis Naslund looks over Colorado Co-op's 1,000 foot long cut as it takes water for the first time.

Water from the San Miguel River flowed through the Colorado Co-op Ditch Company's new Big Bucktail cut for the first time last Friday.

The 2,000 foot long cut, 41 feet deep at it's deepest point, cost approximately \$41,000 to dig. An estimated 66,000 cubic yards of rock and dirt were moved by the contractor, C. E. Mills Construction of Montrose.

The new cut shortens the ditch by some 1,000 feet and replaces an 800 foot long tunnel that was about ready to cave in.

The project should pay for itself in a very few years by giving farmers more water during the growing season.

Meeting Announced

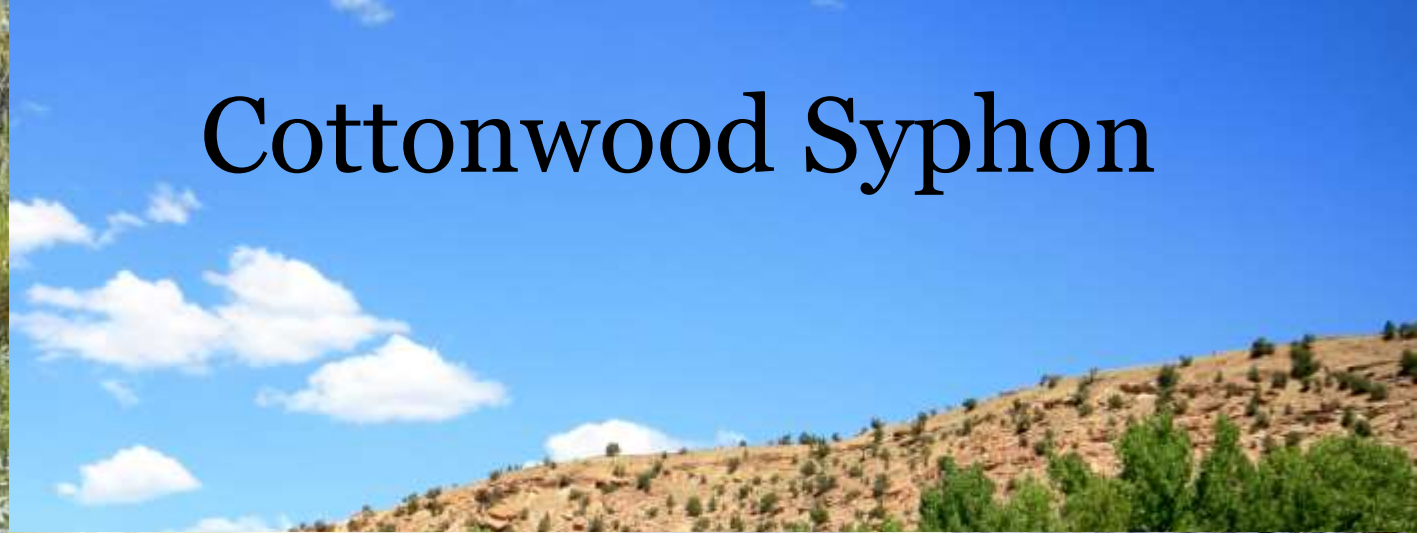
There will be a Quarter Back Club meeting May 23, at 8:00 p. m. in the Home Ec room of the Nucla High School.

This will be the last meeting of this school year.





Cottonwood Syphon



Each section is 40' long, 5' in diameter, and $\frac{1}{4}$ " thick.
Every 10' weighs 2000 pounds. A total of 4 tons per section



Tuttle Draw Syphon 2014









Brooks Trestle



Pressure gate



Head gate and damn



Fish ladder installed in 2011



Three generations of Ditch Superintendents









C.C.C. office 505 Main Street Nucla
Building was moved from Pinon in 1904



San Miguel Basin Forum, Thursday, March 8, 1979

BLM Acknowledges Colorado Cooperative Ditch Company Right—Of—Way Across Land

In a letter signed by Merrill Anderson of The Bureau of Land Management, the CC Ditch Company was officially recognized as having a legal right-of-way for their 17 mile ditch from the San Miguel river to the Nucla area. The Bureau of Land Management had previously stated that the ditch company "was trespassing," and that they must have "official documents showing claim to right-of-way through BLM properties."

In the recent letter, it was stated "based on documents submitted to this office, we have determined that between 1895 and 1928 a canal, known as The High Line Canal, was constructed by The Colorado Cooperative Company" involv-

ing certain described public lands..."

"We acknowledge the appropriation by Colorado Co-operative Company of a 200-foot wide right-of-way across these lands."

Fatten Your Piggy Bank



Sell Good Things You

Don't Use With Classifieds

Dial 864-7425

ROBERTS REPAIR

WARNING

Anyone tampering with or destroying any property belonging to the Colorado Co-Operative Ditch Co. will be prosecuted.

A Reward of \$100.00 will be paid for information leading to the arrest and conviction of any offender.

Colorado Co-Operative Ditch Co.
By Order of the Board of Directors





Every year the Rimrocker Historical Society conducts an ATV tour of the 18 miles of Main lateral. Starting at Nucla and riding on the ditch bank to the head gate at Pinon.

See www.rimrocker.org for more information



THANK YOU