



**SW Basin Roundtable
DCP/DM Sub-Committee**

April 28, 2018

John Currier, P.E. Chief Engineer

Modified from presentation made to

CRWCD Board

July 17, 2018

COLORADO RIVER DISTRICT

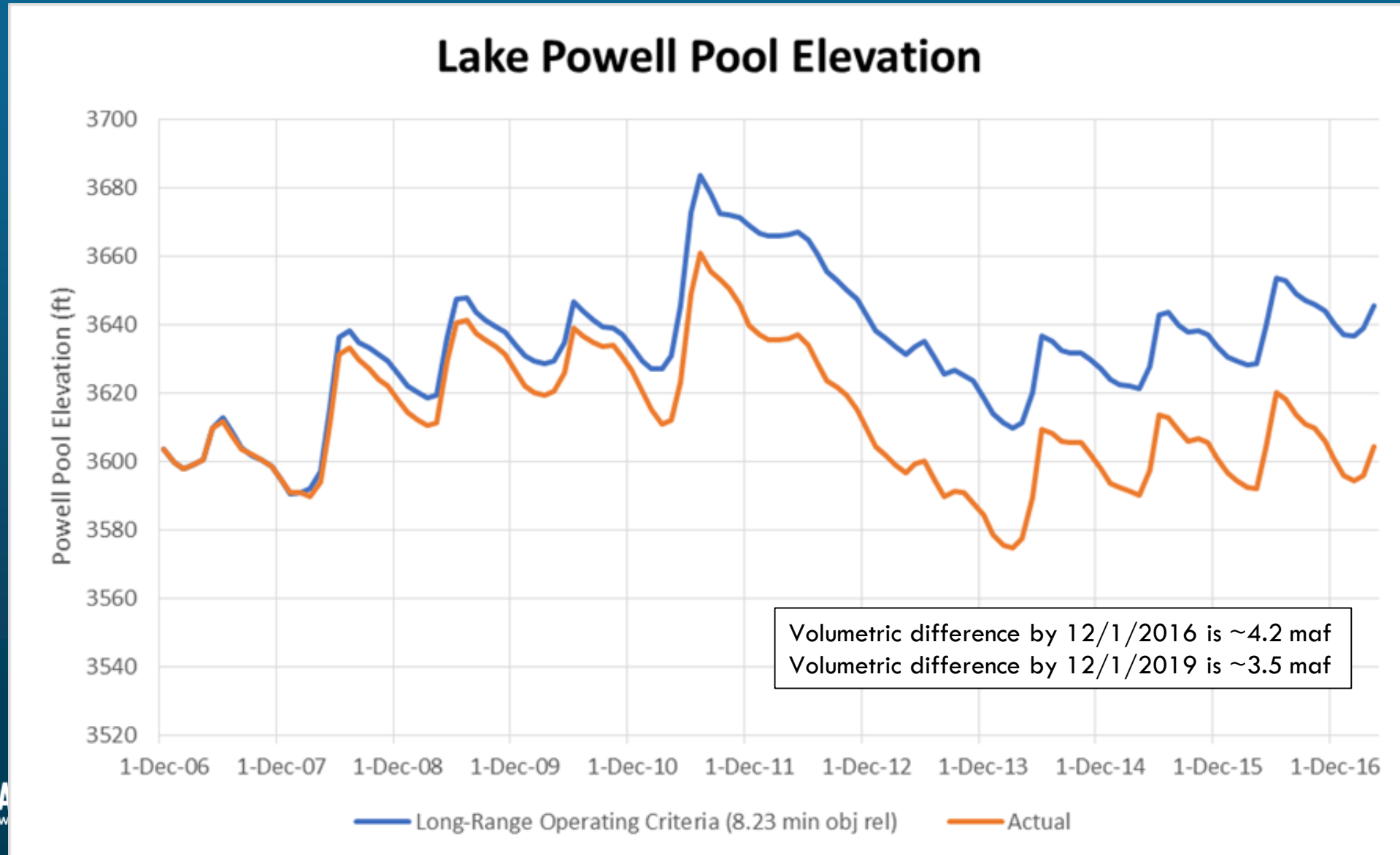
PROTECTING WESTERN COLORADO WATER SINCE 1937

07 Interim Guidelines vs Long-Range Operating Criteria Retrospective

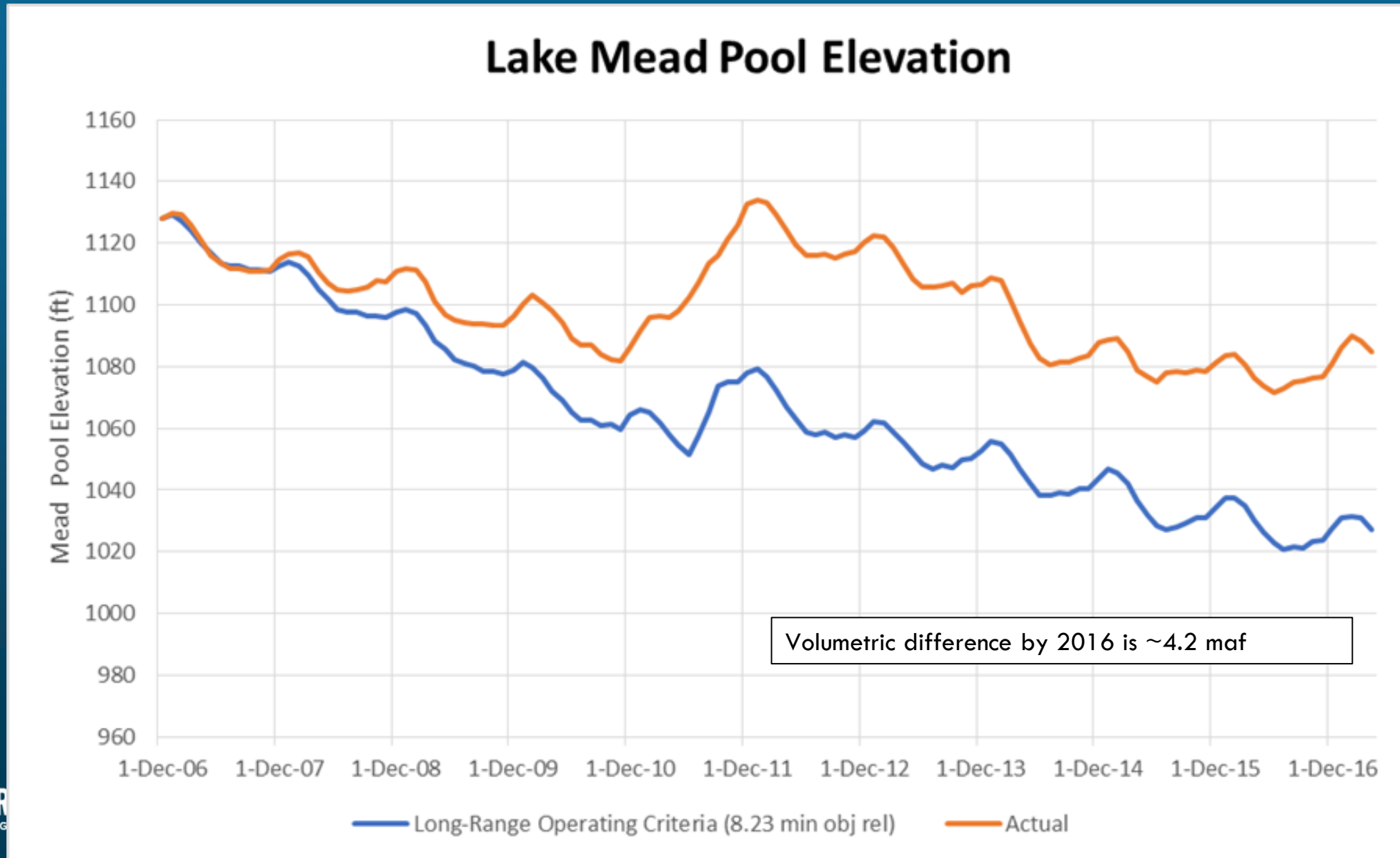
- **Question: How would conditions at Lakes Powell and Mead be different today had operations since 2007 continued under the old LROC policy instead of the 2007 Guidelines?**
- **Orange line is based on actual observed data for Lakes Powell and Mead**
- **Blue line is simulated conditions on both reservoirs using CRSS, assuming the same 2007-2016 hydrology but reverting Powell operations to the 8.23 maf minimum objective release and dynamic calculation of 602a storage as prescribed in the LROC policy rules.**
- **Result: Lake Powell would be approximately 4.2maf fuller, and Lake Mead an equal amount emptier.**



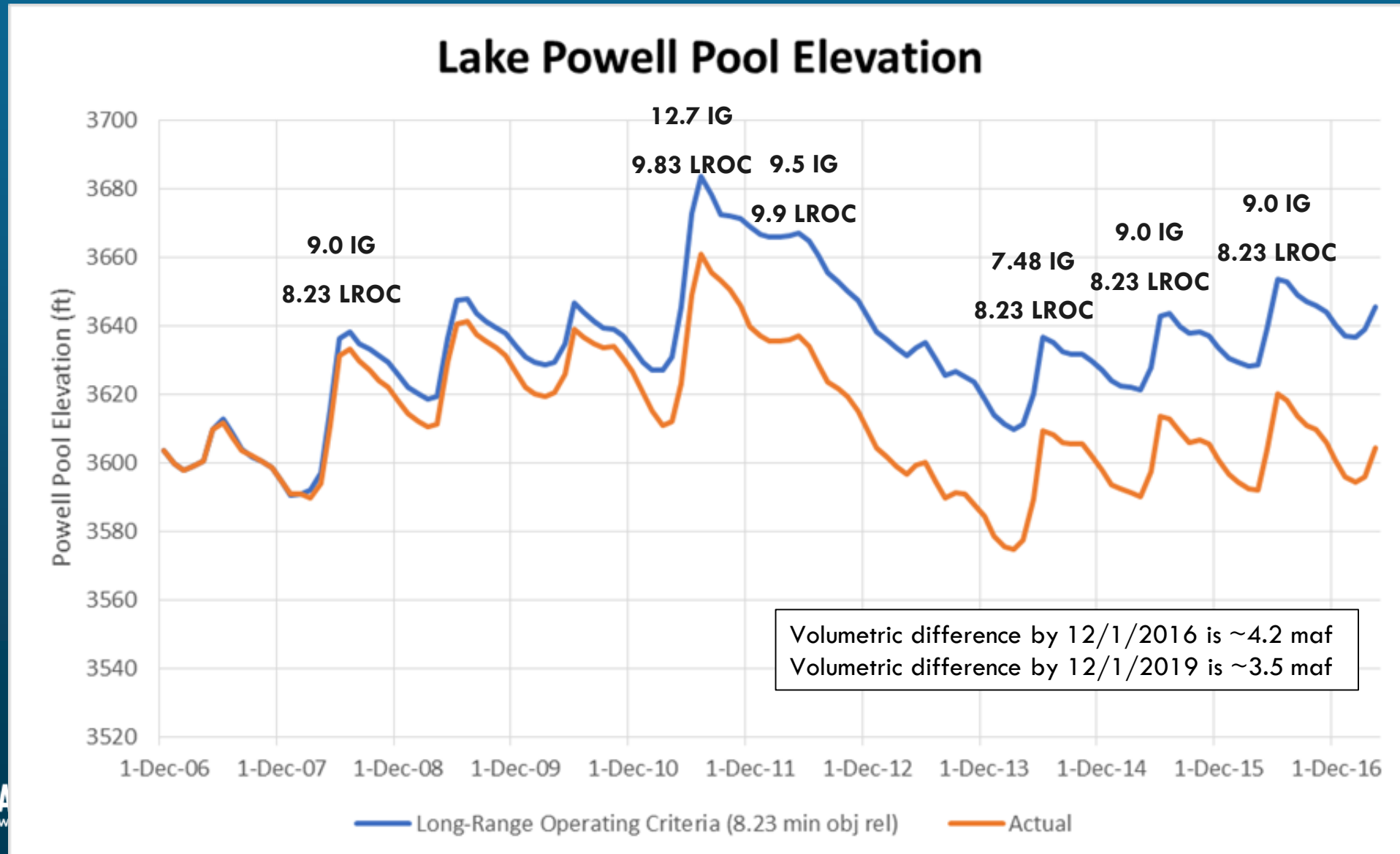
Expected Difference in Lake Powell Conditions: Actual vs. LROC



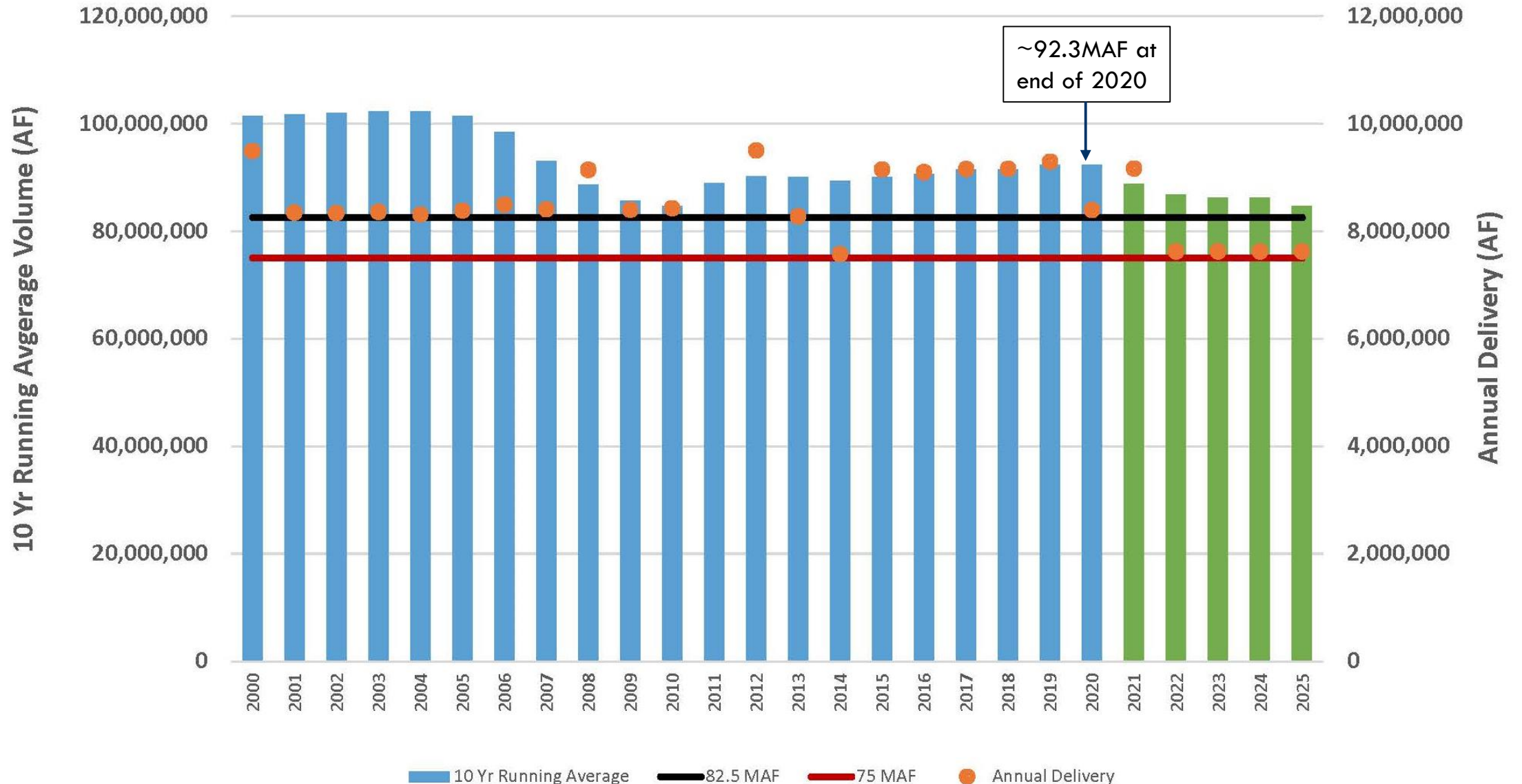
Expected Difference in Lake Mead Conditions: Actual vs. LROC



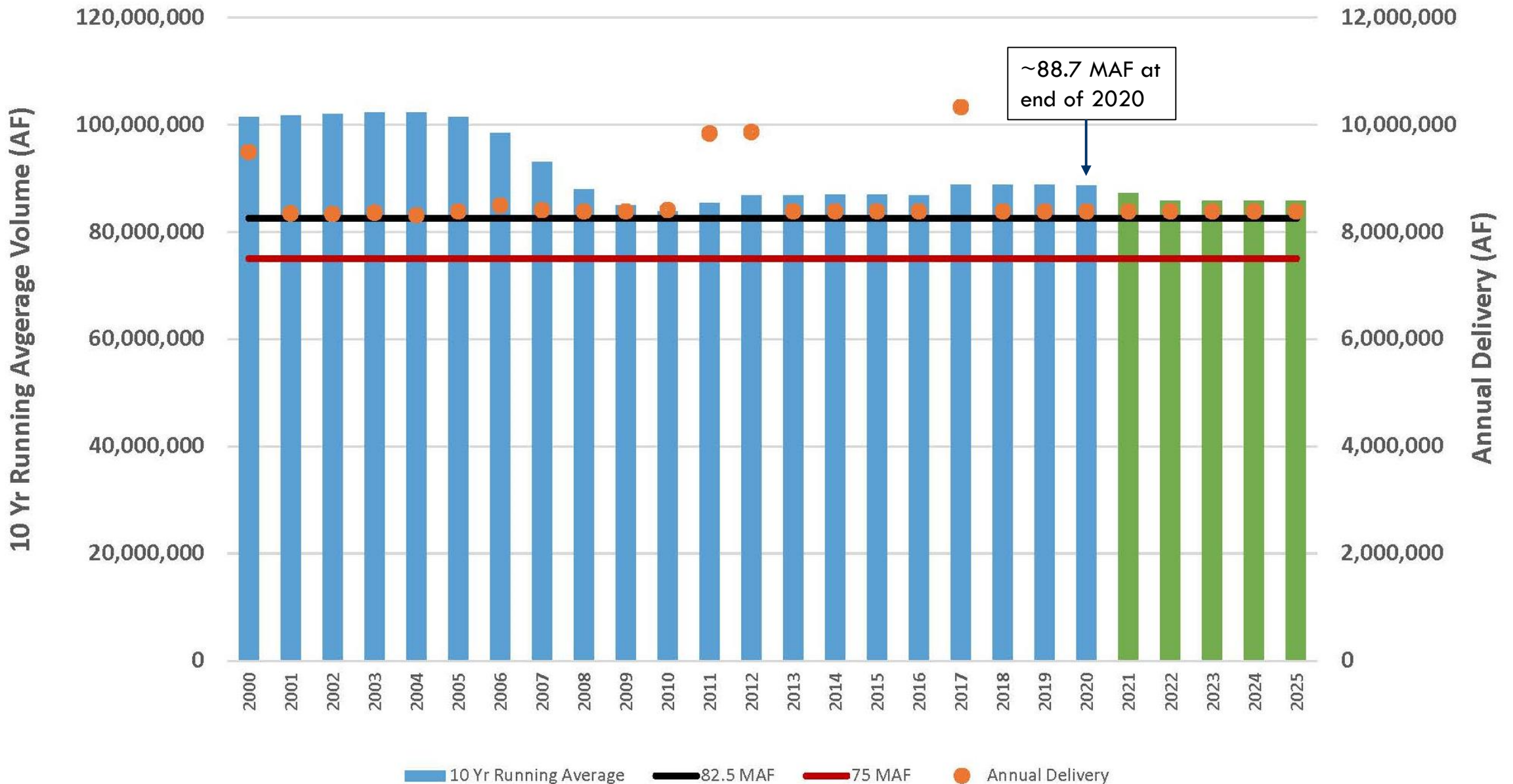
Expected Difference in Lake Powell Conditions: Actual vs. LROC



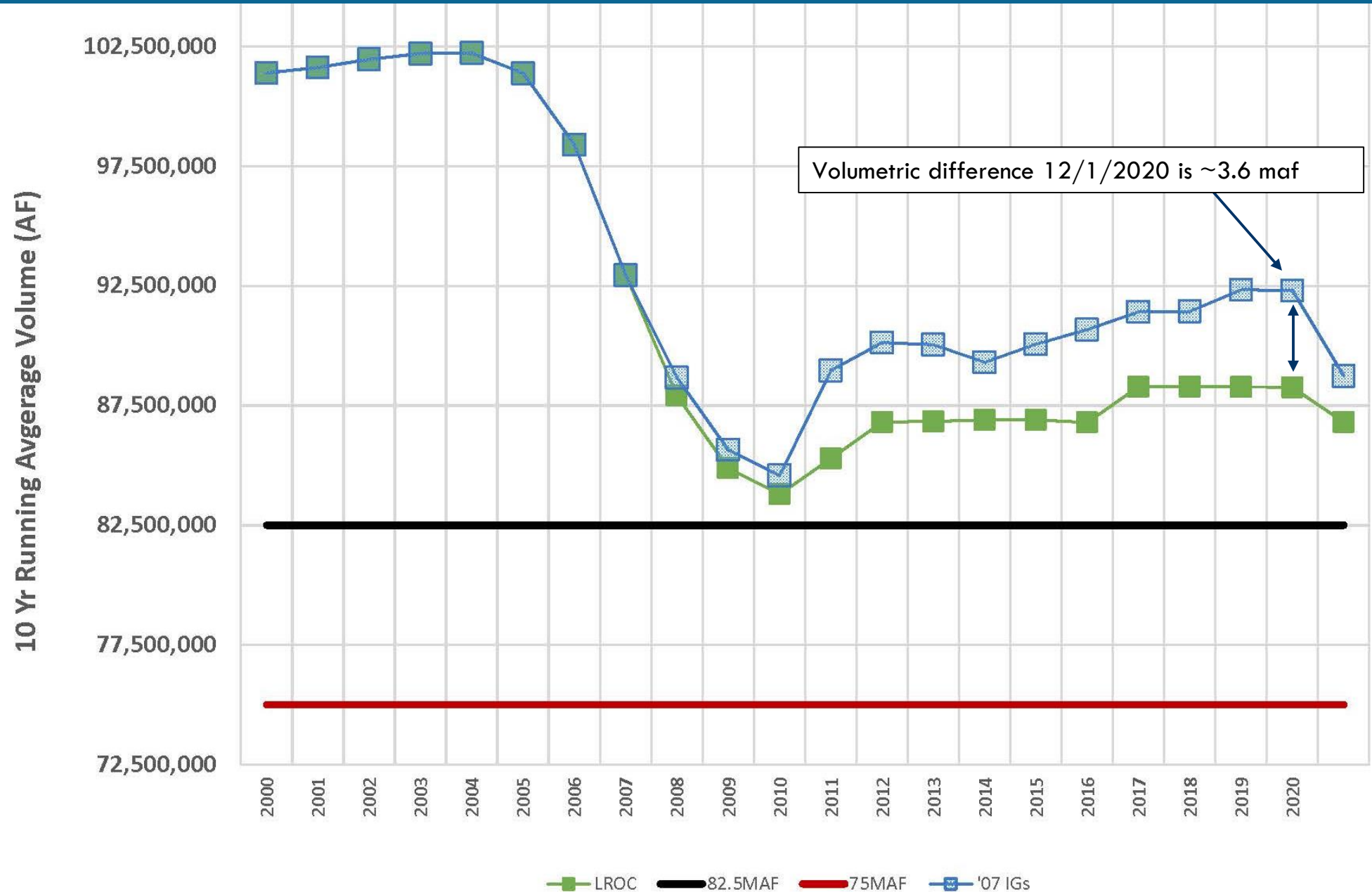
10 Yr. Running Delivery – '07 IGs



10 Yr. Running Delivery – LROC



10 Yr. Running Delivery: LROC vs. IGs



Questions?



COLORADO RIVER DISTRICT
PROTECTING WESTERN COLORADO WATER SINCE 1937